



SZABO SCANDIC

Part of Europa Biosite

Produktinformation



Forschungsprodukte & Biochemikalien



Zellkultur & Verbrauchsmaterial



Diagnostik & molekulare Diagnostik



Laborgeräte & Service

Weitere Information auf den folgenden Seiten!
See the following pages for more information!



Lieferung & Zahlungsart

siehe unsere [Liefer- und Versandbedingungen](#)

Zuschläge

- Mindermengenzuschlag
- Trockeneiszuschlag
- Gefahrgutzuschlag
- Expressversand

SZABO-SCANDIC HandelsgmbH

Quellenstraße 110, A-1100 Wien

T. +43(0)1 489 3961-0

F. +43(0)1 489 3961-7

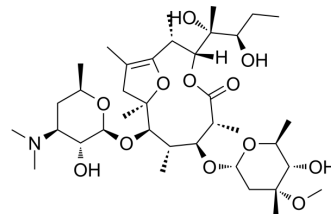
mail@szabo-scandic.com

www.szabo-scandic.com

[linkedin.com/company/szaboscandic](https://www.linkedin.com/company/szaboscandic) 

Pseudoerythromycin A enol ether

Cat. No.:	HY-112057
CAS No.:	105882-69-7
Molecular Formula:	C ₃₇ H ₆₅ NO ₁₂
Molecular Weight:	715.91
Target:	Drug Metabolite
Pathway:	Metabolic Enzyme/Protease
Storage:	Please store the product under the recommended conditions in the Certificate of Analysis.



BIOLOGICAL ACTIVITY

Description	Pseudoerythromycin A enol ether (LY267108) is a degradation product of Erythromycin. Pseudoerythromycin A enol ether has no significant antimicrobial activity ^{[1][2]} .
In Vivo	Pseudoerythromycin A enol ether (LY267108) increases lower esophageal sphincter (LES) pressure in cats ^[2] . MCE has not independently confirmed the accuracy of these methods. They are for reference only.

REFERENCES

- [1]. Pendela M, et al. Combined use of liquid chromatography with mass spectrometry and nuclear magnetic resonance for the identification of degradation compounds in an erythromycin formulation. *Anal Bioanal Chem.* 2012;402(2):781-790.
- [2]. Greenwood B, et al. Effects of LY267108, an erythromycin analogue derivative, on lower esophageal sphincter function in the cat. *Gastroenterology.* 1994;106(3):624-628.

Caution: Product has not been fully validated for medical applications. For research use only.

Tel: 609-228-6898

Fax: 609-228-5909

E-mail: tech@MedChemExpress.com

Address: 1 Deer Park Dr, Suite Q, Monmouth Junction, NJ 08852, USA