



SZABO SCANDIC

Part of Europa Biosite

Produktinformation



Forschungsprodukte & Biochemikalien



Zellkultur & Verbrauchsmaterial



Diagnostik & molekulare Diagnostik



Laborgeräte & Service

Weitere Information auf den folgenden Seiten!
See the following pages for more information!



Lieferung & Zahlungsart

siehe unsere [Liefer- und Versandbedingungen](#)

Zuschläge

- Mindermengenzuschlag
- Trockeneiszuschlag
- Gefahrgutzuschlag
- Expressversand

SZABO-SCANDIC HandelsgmbH

Quellenstraße 110, A-1100 Wien

T. +43(0)1 489 3961-0

F. +43(0)1 489 3961-7

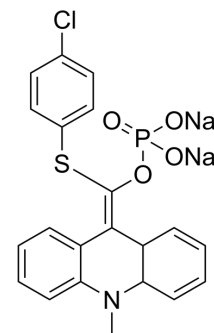
mail@szabo-scandic.com

www.szabo-scandic.com

[linkedin.com/company/szaboscandic](https://www.linkedin.com/company/szaboscandic) 

Lumigen APS-5

Cat. No.:	HY-112832
CAS No.:	193884-53-6
Molecular Formula:	C ₂₁ H ₁₇ ClNNa ₂ O ₄ PS
Molecular Weight:	491.84
Target:	Phosphatase
Pathway:	Metabolic Enzyme/Protease
Storage:	Please store the product under the recommended conditions in the Certificate of Analysis.



BIOLOGICAL ACTIVITY

Description	Lumigen APS-5 is a substrate of alkaline phosphatase (ALP). Lumigen APS-5 can be used to assess the activity of alkaline phosphatase (ALP) ^[1] .
In Vitro	<p>Guidelines (Following is our recommended protocol. This protocol only provides a guideline, and should be modified according to your specific needs).</p> <p>Measurement of Alkaline Phosphatase Activity^[1]:</p> <ol style="list-style-type: none"> Mix testing samples (10 mg) with Lumigen APS-5 (100 μL) and vortexed for 10 s at the highest setting. For the control, 10 μL of distilled water. The mixed samples are heat treated at 75°C for 1 min in a water bath to inactivate nonbacterial ALP. After heat treatment, samples are placed in 96 well plates and measured immediately. The activity of ALP is measured by using a luminometer. MCE has not independently confirmed the accuracy of these methods. They are for reference only.

REFERENCES

[1]. Park EJ, Kang DH. The use of bacterial alkaline phosphatase assay for rapid monitoring of bacterial counts on spinach. J Food Sci. 2008 Jun;73(5):M236-8.

Caution: Product has not been fully validated for medical applications. For research use only.

Tel: 609-228-6898

Fax: 609-228-5909

E-mail: tech@MedChemExpress.com

Address: 1 Deer Park Dr, Suite Q, Monmouth Junction, NJ 08852, USA