



SZABO SCANDIC

Part of Europa Biosite

Produktinformation



Forschungsprodukte & Biochemikalien



Zellkultur & Verbrauchsmaterial



Diagnostik & molekulare Diagnostik



Laborgeräte & Service

Weitere Information auf den folgenden Seiten!
See the following pages for more information!



Lieferung & Zahlungsart

siehe unsere [Liefer- und Versandbedingungen](#)

Zuschläge

- Mindermengenzuschlag
- Trockeneiszuschlag
- Gefahrgutzuschlag
- Expressversand

SZABO-SCANDIC HandelsgmbH

Quellenstraße 110, A-1100 Wien

T. +43(0)1 489 3961-0

F. +43(0)1 489 3961-7

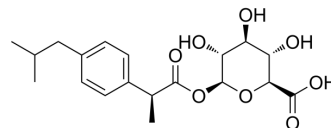
mail@szabo-scandic.com

www.szabo-scandic.com

[linkedin.com/company/szaboscandic](https://www.linkedin.com/company/szaboscandic) 

(S)-Ibuprofen acyl-β-D-glucuronide

Cat. No.:	HY-113018A
CAS No.:	98649-76-4
Molecular Formula:	C ₁₉ H ₂₆ O ₈
Molecular Weight:	382.4
Target:	Others
Pathway:	Others
Storage:	-20°C, protect from light, stored under nitrogen * In solvent : -80°C, 6 months; -20°C, 1 month (protect from light, stored under nitrogen)



SOLVENT & SOLUBILITY

In Vitro

Ethanol : 3.82 mg/mL (9.99 mM; Need ultrasonic and warming)

Concentration	Mass		
	1 mg	5 mg	10 mg
1 mM	2.6151 mL	13.0753 mL	26.1506 mL
5 mM	0.5230 mL	2.6151 mL	5.2301 mL
10 mM	---	---	---

Please refer to the solubility information to select the appropriate solvent.

BIOLOGICAL ACTIVITY

Description

(S)-Ibuprofen acyl-β-D-glucuronide ((S)-Ibuprofen glucuronide) is a compound used to study the metabolism and pharmacokinetics of S-ibuprofen, a non-steroidal anti-inflammatory drug. (S)-Ibuprofen acyl-β-D-glucuronide is an acylglucuronic acid metabolite produced by S-ibuprofen in the liver^[1].

REFERENCES

[1]. Tan SC, et al. Stereoselectivity of ibuprofen metabolism and pharmacokinetics following the administration of the racemate to healthy volunteers. *Xenobiotica*. 2002 Aug;32(8):683-97.

Caution: Product has not been fully validated for medical applications. For research use only.

Tel: 609-228-6898

Fax: 609-228-5909

E-mail: tech@MedChemExpress.com

Address: 1 Deer Park Dr, Suite Q, Monmouth Junction, NJ 08852, USA