



# SZABO SCANDIC

Part of Europa Biosite

## Produktinformation



Forschungsprodukte & Biochemikalien



Zellkultur & Verbrauchsmaterial



Diagnostik & molekulare Diagnostik



Laborgeräte & Service

Weitere Information auf den folgenden Seiten!  
See the following pages for more information!



### Lieferung & Zahlungsart

siehe unsere [Liefer- und Versandbedingungen](#)

### Zuschläge

- Mindermengenzuschlag
- Trockeneiszuschlag
- Gefahrgutzuschlag
- Expressversand

### SZABO-SCANDIC HandelsgmbH

Quellenstraße 110, A-1100 Wien

T. +43(0)1 489 3961-0

F. +43(0)1 489 3961-7

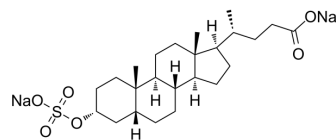
[mail@szabo-scandic.com](mailto:mail@szabo-scandic.com)

[www.szabo-scandic.com](http://www.szabo-scandic.com)

[linkedin.com/company/szaboscandic](https://www.linkedin.com/company/szaboscandic) 

## Lithocholic acid 3-sulfate disodium

<b>Cat. No.:</b>	HY-113238A
<b>CAS No.:</b>	64936-81-8
<b>Molecular Formula:</b>	C <sub>24</sub> H <sub>38</sub> Na <sub>2</sub> O <sub>6</sub> S
<b>Molecular Weight:</b>	500.6
<b>Target:</b>	Biochemical Assay Reagents
<b>Pathway:</b>	Others
<b>Storage:</b>	-20°C, sealed storage, away from moisture * In solvent : -80°C, 6 months; -20°C, 1 month (sealed storage, away from moisture)



### SOLVENT & SOLUBILITY

#### In Vitro

H<sub>2</sub>O : 33.33 mg/mL (66.58 mM; Need ultrasonic)

Preparing Stock Solutions	Solvent Concentration	Mass		
		1 mg	5 mg	10 mg
	1 mM	1.9976 mL	9.9880 mL	19.9760 mL
	5 mM	0.3995 mL	1.9976 mL	3.9952 mL
	10 mM	0.1998 mL	0.9988 mL	1.9976 mL

Please refer to the solubility information to select the appropriate solvent.

### BIOLOGICAL ACTIVITY

#### Description

Lithocholic acid 3-sulfate disodium salt is a biochemical reagent that can be used as a biological material or organic compound for life science related research.

**Caution: Product has not been fully validated for medical applications. For research use only.**

Tel: 609-228-6898

Fax: 609-228-5909

E-mail: tech@MedChemExpress.com

Address: 1 Deer Park Dr, Suite Q, Monmouth Junction, NJ 08852, USA