



# SZABO SCANDIC

Part of Europa Biosite

## Produktinformation



Forschungsprodukte & Biochemikalien



Zellkultur & Verbrauchsmaterial



Diagnostik & molekulare Diagnostik



Laborgeräte & Service

Weitere Information auf den folgenden Seiten!  
See the following pages for more information!



### Lieferung & Zahlungsart

siehe unsere [Liefer- und Versandbedingungen](#)

### Zuschläge

- Mindermengenzuschlag
- Trockeneiszuschlag
- Gefahrgutzuschlag
- Expressversand

### SZABO-SCANDIC HandelsgmbH

Quellenstraße 110, A-1100 Wien

T. +43(0)1 489 3961-0

F. +43(0)1 489 3961-7

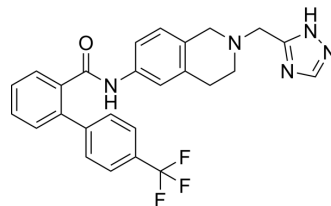
[mail@szabo-scandic.com](mailto:mail@szabo-scandic.com)

[www.szabo-scandic.com](http://www.szabo-scandic.com)

[linkedin.com/company/szaboscandic](https://www.linkedin.com/company/szaboscandic) 

## CP-346086

|                           |   |       |          |
|---------------------------|---|-------|----------|
| <b>Cat. No.:</b>          | HY-113955   |       |          |
| <b>CAS No.:</b>           | 186390-48-7   |       |          |
| <b>Molecular Formula:</b> | C <sub>26</sub> H <sub>22</sub> F <sub>3</sub> N <sub>5</sub> O |       |          |
| <b>Molecular Weight:</b>  | 477.48  |       |          |
| <b>Target:</b>            | Microsomal Triglyceride Transfer Protein (MTP)                  |       |          |
| <b>Pathway:</b>           | Metabolic Enzyme/Protease                                       |       |          |
| <b>Storage:</b>           | Powder  | -20°C | 3 years  |
|                           |   | 4°C   | 2 years  |
|                           | In solvent  | -80°C | 6 months |
|                           |   | -20°C | 1 month  |



### SOLVENT & SOLUBILITY

#### In Vitro

DMSO : 100 mg/mL (209.43 mM; Need ultrasonic)

| Concentration | Mass      |            |            |
|---------------|-----------|------------|------------|
|               | 1 mg      | 5 mg       | 10 mg      |
| 1 mM          | 2.0943 mL | 10.4716 mL | 20.9433 mL |
| 5 mM          | 0.4189 mL | 2.0943 mL  | 4.1887 mL  |
| 10 mM         | 0.2094 mL | 1.0472 mL  | 2.0943 mL  |

Please refer to the solubility information to select the appropriate solvent.

### BIOLOGICAL ACTIVITY

#### Description

CP-346086 is a potent and orally active microsomal triglyceride transfer protein (MTP) inhibitor, with an IC<sub>50</sub> of 2.0 nM for human and rodent MTP. CP-346086 can lower plasma cholesterol and triglycerides in vivo<sup>[1]</sup>.

#### IC<sub>50</sub> & Target

IC<sub>50</sub>: 2.0 nM (MTP)<sup>[1]</sup>

#### In Vitro

CP-346086 (0.1-1000 nM) dose-dependently inhibits human MTP-mediated triglyceride transfer between vesicles with an IC<sub>50</sub> of 2.0 nM<sup>[1]</sup>.

CP-346086 (24 h) inhibits apolipoprotein B (apoB) and triglyceride secretion (IC<sub>50</sub>=2.6 nM) from Hep-G2 cells without affecting apoA-I secretion or lipid synthesis<sup>[1]</sup>.

MCE has not independently confirmed the accuracy of these methods. They are for reference only.

#### In Vivo

CP-346086 (1-100 mg/kg; oral gavage once daily for 2 weeks) reduces plasma total, VLDL, and LDL cholesterol and triglycerides in mice<sup>[1]</sup>.

CP-346086 (25 mg/kg; a single p.o.) results in an almost complete inhibition of Tyloxapol-induced triglyceride accumulation in fasted rats<sup>[1]</sup>.

CP-346086 (0.1-10 mg/kg; a single p.o.) reduces acute plasma triglyceride in mice<sup>[1]</sup>.  
MCE has not independently confirmed the accuracy of these methods. They are for reference only.

|                 |   |
|-----------------|---|
| Animal Model:   | B6CBAF1J mice <sup>[1]</sup>  |
| Dosage:         | 1, 2, 10, 20, 100 mg/kg   |
| Administration: | Oral gavage once daily for 2 weeks  |
| Result:         | Lowered total, VLDL, and LDL cholesterol and triglycerides dose dependently with 23%, 33%, 75%, and 62% reductions at 10 mg/kg/day. |

## REFERENCES

[1]. Chandler CE, et al. CP-346086: an MTP inhibitor that lowers plasma cholesterol and triglycerides in experimental animals and in humans. J Lipid Res. 2003 Oct;44(10):1887-901.

**Caution: Product has not been fully validated for medical applications. For research use only.**

Tel: 609-228-6898

Fax: 609-228-5909

E-mail: tech@MedChemExpress.com

Address: 1 Deer Park Dr, Suite Q, Monmouth Junction, NJ 08852, USA