



SZABO SCANDIC

Part of Europa Biosite

Produktinformation



Forschungsprodukte & Biochemikalien



Zellkultur & Verbrauchsmaterial



Diagnostik & molekulare Diagnostik



Laborgeräte & Service

Weitere Information auf den folgenden Seiten!
See the following pages for more information!



Lieferung & Zahlungsart

siehe unsere [Liefer- und Versandbedingungen](#)

Zuschläge

- Mindermengenzuschlag
- Trockeneiszuschlag
- Gefahrgutzuschlag
- Expressversand

SZABO-SCANDIC HandelsgmbH

Quellenstraße 110, A-1100 Wien

T. +43(0)1 489 3961-0

F. +43(0)1 489 3961-7

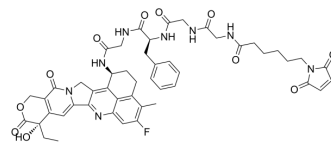
mail@szabo-scandic.com

www.szabo-scandic.com

[linkedin.com/company/szaboscandic](https://www.linkedin.com/company/szaboscandic) 

MC-GGFG-Exatecan

Cat. No.:	HY-114233		
CAS No.:	1600418-29-8		
Molecular Formula:	C ₄₉ H ₅₁ FN ₈ O ₁₁		
Molecular Weight:	946.97		
Target:	Drug-Linker Conjugates for ADC		
Pathway:	Antibody-drug Conjugate/ADC Related		
Storage:	Powder	-20°C	3 years
	In solvent	-80°C	6 months
		-20°C	1 month



SOLVENT & SOLUBILITY

In Vitro

DMSO : 50 mg/mL (52.80 mM; Need ultrasonic)

Concentration	Mass		
	1 mg	5 mg	10 mg
1 mM	1.0560 mL	5.2800 mL	10.5600 mL
5 mM	0.2112 mL	1.0560 mL	2.1120 mL
10 mM	0.1056 mL	0.5280 mL	1.0560 mL

Please refer to the solubility information to select the appropriate solvent.

BIOLOGICAL ACTIVITY

Description

MC-GGFG-Exatecan (MC-GGFG-DX8951) is a agent-linker conjugate for ADC. MC-GGFG-Exatecan is a DX8951 (a DNA topoisomerase I inhibitor) derivative with protease cleavable MC-GGFG linker. MC-GGFG-Exatecan shows antitumor activity and can be used to prepare DX8951 antibody conjugate (ADC)^[1].

IC₅₀ & Target

Camptothecins

In Vitro

In MC-GGFG-Exatecan, GGFG is selectively cleaved by lysosomal enzymes (presumably cathepsins)^[1]. MCE has not independently confirmed the accuracy of these methods. They are for reference only.

In Vivo

In MC-GGFG-Exatecan, GGFG is known to release drugs into tumor tissue without releasing them into peripheral circulation ^[1]. MCE has not independently confirmed the accuracy of these methods. They are for reference only.

CUSTOMER VALIDATION

-
- Mol Cancer Ther. 2023 Sep 5;22(9):1013-1027.

See more customer validations on www.MedChemExpress.com

REFERENCES

[1]. Nakada T, et al. Novel antibody drug conjugates containing exatecan derivative-based cytotoxic payloads. Bioorg Med Chem Lett. 2016 Mar 15;26(6):1542-1545.

Caution: Product has not been fully validated for medical applications. For research use only.

Tel: 609-228-6898

Fax: 609-228-5909

E-mail: tech@MedChemExpress.com

Address: 1 Deer Park Dr, Suite Q, Monmouth Junction, NJ 08852, USA