



# SZABO SCANDIC

Part of Europa Biosite

## Produktinformation



Forschungsprodukte & Biochemikalien



Zellkultur & Verbrauchsmaterial



Diagnostik & molekulare Diagnostik



Laborgeräte & Service

Weitere Information auf den folgenden Seiten!  
See the following pages for more information!



### Lieferung & Zahlungsart

siehe unsere [Liefer- und Versandbedingungen](#)

### Zuschläge

- Mindermengenzuschlag
- Trockeneiszuschlag
- Gefahrgutzuschlag
- Expressversand

### SZABO-SCANDIC HandelsgmbH

Quellenstraße 110, A-1100 Wien

T. +43(0)1 489 3961-0

F. +43(0)1 489 3961-7

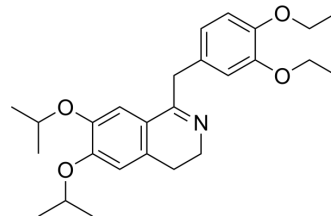
[mail@szabo-scandic.com](mailto:mail@szabo-scandic.com)

[www.szabo-scandic.com](http://www.szabo-scandic.com)

[linkedin.com/company/szaboscandic](https://www.linkedin.com/company/szaboscandic) 

## Diproteverine

<b>Cat. No.:</b>	HY-114638
<b>CAS No.:</b>	69373-95-1
<b>Molecular Formula:</b>	C <sub>26</sub> H <sub>35</sub> NO <sub>4</sub>
<b>Molecular Weight:</b>	425.56
<b>Target:</b>	Calcium Channel
<b>Pathway:</b>	Membrane Transporter/Ion Channel; Neuronal Signaling
<b>Storage:</b>	Please store the product under the recommended conditions in the Certificate of Analysis.



### BIOLOGICAL ACTIVITY

<b>Description</b>	Diproteverine (BRL 40015) is an oral activity calcium channel blocker. Diproteverine embryonic toxicity. Diproteverine also shows antianginal properties <sup>[1][2]</sup> .								
<b>In Vivo</b>	<p>Diproteverine (40, 80, 160, 320 mg/kg; p.o.; daily for 10 days) shows embryonic toxicity in rats<sup>[1]</sup>. MCE has not independently confirmed the accuracy of these methods. They are for reference only.</p> <table border="1"> <tr> <td>Animal Model:</td> <td>Sprague-Dawley virgin female rats<sup>[1]</sup></td> </tr> <tr> <td>Dosage:</td> <td>40, 80, 160, 320 mg/kg</td> </tr> <tr> <td>Administration:</td> <td>P.o.; daily for 10 days</td> </tr> <tr> <td>Result:</td> <td>Induced embryonic deaths, significantly increased incidence of fetuses showing an unusual pattern of digital, tail, heart, and vertebral abnormalities.</td> </tr> </table>	Animal Model:	Sprague-Dawley virgin female rats <sup>[1]</sup>	Dosage:	40, 80, 160, 320 mg/kg	Administration:	P.o.; daily for 10 days	Result:	Induced embryonic deaths, significantly increased incidence of fetuses showing an unusual pattern of digital, tail, heart, and vertebral abnormalities.
Animal Model:	Sprague-Dawley virgin female rats <sup>[1]</sup>								
Dosage:	40, 80, 160, 320 mg/kg								
Administration:	P.o.; daily for 10 days								
Result:	Induced embryonic deaths, significantly increased incidence of fetuses showing an unusual pattern of digital, tail, heart, and vertebral abnormalities.								

### REFERENCES

[1]. Ridings JE, et al. Prenatal toxicity studies in rats and rabbits with the calcium channel blocker diproteverine. *Reprod Toxicol.* 1996 Jan-Feb;10(1):43-9.

[2]. Lacroix P, et al. Diproteverine (BRL 40015): a new type of calcium antagonist with potential antianginal properties. *Eur J Pharmacol.* 1991 Jan 17;192(3):317-27.

**Caution: Product has not been fully validated for medical applications. For research use only.**

Tel: 609-228-6898

Fax: 609-228-5909

E-mail: tech@MedChemExpress.com

Address: 1 Deer Park Dr, Suite Q, Monmouth Junction, NJ 08852, USA