



SZABO SCANDIC

Part of Europa Biosite

Produktinformation



Forschungsprodukte & Biochemikalien



Zellkultur & Verbrauchsmaterial



Diagnostik & molekulare Diagnostik



Laborgeräte & Service

Weitere Information auf den folgenden Seiten!
See the following pages for more information!



Lieferung & Zahlungsart

siehe unsere [Liefer- und Versandbedingungen](#)

Zuschläge

- Mindermengenzuschlag
- Trockeneiszuschlag
- Gefahrgutzuschlag
- Expressversand

SZABO-SCANDIC HandelsgmbH

Quellenstraße 110, A-1100 Wien

T. +43(0)1 489 3961-0

F. +43(0)1 489 3961-7

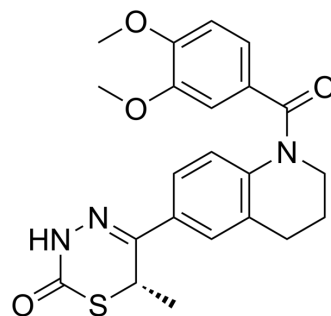
mail@szabo-scandic.com

www.szabo-scandic.com

[linkedin.com/company/szaboscandic](https://www.linkedin.com/company/szaboscandic) 

EMD 57439

Cat. No.:	HY-114990
CAS No.:	148714-88-9
Molecular Formula:	C ₂₂ H ₂₃ N ₃ O ₄ S
Molecular Weight:	425.5
Target:	Phosphodiesterase (PDE)
Pathway:	Metabolic Enzyme/Protease
Storage:	Please store the product under the recommended conditions in the Certificate of Analysis.



BIOLOGICAL ACTIVITY

Description

EMD 57439 is a selective PDE-III inhibitor. EMD 57439 does not significantly increase c-AMP concentration and has little effect on Ca(50)^[1].

REFERENCES

[1]. Kusakari Y, et al. Use of the Ca-shortening curve to estimate the myofilament responsiveness to Ca²⁺ in tetanized rat ventricular myocytes. J Physiol Sci. 2006 Jun;56(3):219-26.

Caution: Product has not been fully validated for medical applications. For research use only.

Tel: 609-228-6898

Fax: 609-228-5909

E-mail: tech@MedChemExpress.com

Address: 1 Deer Park Dr, Suite Q, Monmouth Junction, NJ 08852, USA