



SZABO SCANDIC

Part of Europa Biosite

Produktinformation



Forschungsprodukte & Biochemikalien



Zellkultur & Verbrauchsmaterial



Diagnostik & molekulare Diagnostik



Laborgeräte & Service

Weitere Information auf den folgenden Seiten!
See the following pages for more information!



Lieferung & Zahlungsart

siehe unsere [Liefer- und Versandbedingungen](#)

Zuschläge

- Mindermengenzuschlag
- Trockeneiszuschlag
- Gefahrgutzuschlag
- Expressversand

SZABO-SCANDIC HandelsgmbH

Quellenstraße 110, A-1100 Wien

T. +43(0)1 489 3961-0

F. +43(0)1 489 3961-7

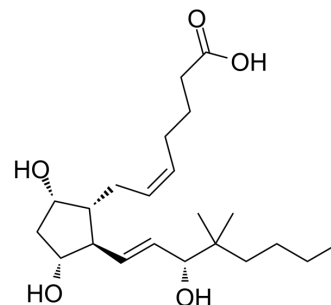
mail@szabo-scandic.com

www.szabo-scandic.com

[linkedin.com/company/szaboscandic](https://www.linkedin.com/company/szaboscandic) 

16,16-Dimethylprostaglandin F2 α

Cat. No.:	HY-116051
CAS No.:	39746-23-1
Molecular Formula:	C ₂₂ H ₃₈ O ₅
Molecular Weight:	382.53
Target:	Others
Pathway:	Others
Storage:	Please store the product under the recommended conditions in the Certificate of Analysis.



BIOLOGICAL ACTIVITY

Description	16,16-Dimethylprostaglandin F2 α (16,16-Dimethyl-PGF2 α) is a potent analog of PGF2 α (HY-12956), which exhibits similar binding potency as PGF2 α does. 16,16-Dimethylprostaglandin F2 α serves as a bronchoconstrictor ^{[1][2]} .								
In Vivo	<p>16,16-Dimethylprostaglandin F2α (0-0.5 μg, iv, single dose) inhibits histamine-induced intracheal insufflation pressure increase in guinea pigs model.</p> <p>MCE has not independently confirmed the accuracy of these methods. They are for reference only.</p> <table border="1"> <tr> <td>Animal Model:</td> <td>guinea pigs model^[1]</td> </tr> <tr> <td>Dosage:</td> <td>0-0.5 μg</td> </tr> <tr> <td>Administration:</td> <td>iv, single dose</td> </tr> <tr> <td>Result:</td> <td>Inhibited histamine-induced increase in tracheal insufflation pressure.</td> </tr> </table>	Animal Model:	guinea pigs model ^[1]	Dosage:	0-0.5 μ g	Administration:	iv, single dose	Result:	Inhibited histamine-induced increase in tracheal insufflation pressure.
Animal Model:	guinea pigs model ^[1]								
Dosage:	0-0.5 μ g								
Administration:	iv, single dose								
Result:	Inhibited histamine-induced increase in tracheal insufflation pressure.								

REFERENCES

[1]. Strandberg K, et al., Bronchial effects of some prostaglandin E and F analogues. Acta Physiol Scand. 1977 Jun;100(2):172-81.

[2]. Balapure AK, et al., Structural requirements for prostaglandin analog interaction with the ovine corpus luteum prostaglandin F2 alpha receptor. Implications for development of a photoaffinity probe. Biochem Pharmacol. 1989 Jul 15;38(14):2375-81.

Caution: Product has not been fully validated for medical applications. For research use only.

Tel: 609-228-6898

Fax: 609-228-5909

E-mail: tech@MedChemExpress.com

Address: 1 Deer Park Dr, Suite Q, Monmouth Junction, NJ 08852, USA