



# SZABO SCANDIC

Part of Europa Biosite

## Produktinformation



Forschungsprodukte & Biochemikalien



Zellkultur & Verbrauchsmaterial



Diagnostik & molekulare Diagnostik



Laborgeräte & Service

Weitere Information auf den folgenden Seiten!  
See the following pages for more information!



### Lieferung & Zahlungsart

siehe unsere [Liefer- und Versandbedingungen](#)

### Zuschläge

- Mindermengenzuschlag
- Trockeneiszuschlag
- Gefahrgutzuschlag
- Expressversand

### SZABO-SCANDIC HandelsgmbH

Quellenstraße 110, A-1100 Wien

T. +43(0)1 489 3961-0

F. +43(0)1 489 3961-7

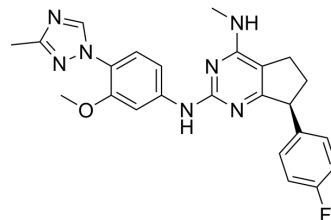
[mail@szabo-scandic.com](mailto:mail@szabo-scandic.com)

[www.szabo-scandic.com](http://www.szabo-scandic.com)

[linkedin.com/company/szaboscandic](https://www.linkedin.com/company/szaboscandic) 

## BMS-932481

Cat. No.:	HY-117957
CAS No.:	1263871-36-8
Molecular Formula:	C <sub>24</sub> H <sub>24</sub> FN <sub>7</sub> O
Molecular Weight:	445.49
Target:	γ-secretase
Pathway:	Neuronal Signaling; Stem Cell/Wnt
Storage:	Please store the product under the recommended conditions in the Certificate of Analysis.



### BIOLOGICAL ACTIVITY

<b>Description</b>	BMS-932481 is an orally active modulator for γ-secretase, selectively reduce Aβ1-42 and Aβ1-40 production, with IC <sub>50</sub> s of 6.6 and 25.3 nM, respectively <sup>[1]</sup> .								
<b>In Vivo</b>	<p>BMS-932481 (2-30 mg/kg, po, single dose) reduces the levels of Aβ1-42 and Aβ1-40, increases levels of Aβ1-38 and Aβ1-37, without changing overall amounts of Aβ peptides in dog models<sup>[1]</sup>.</p> <p>BMS-932481 (2.5-15 mg/kg, iv, single dose) exhibits moderate brain penetration with brain-to-plasma ratio and AUC<sub>brain</sub> to AUC<sub>plasma</sub> ratio of about 0.23 and 0.6 in Sprague-Dawley rats<sup>[1]</sup>.</p> <p>MCE has not independently confirmed the accuracy of these methods. They are for reference only.</p> <table border="1"> <tr> <td>Animal Model:</td> <td>Beague dog model<sup>[1]</sup></td> </tr> <tr> <td>Dosage:</td> <td>2-30 mg/kg</td> </tr> <tr> <td>Administration:</td> <td>po, single dose</td> </tr> <tr> <td>Result:</td> <td>Reduced levels of Aβ1-42 and Aβ1-40 of 65% with 30 mg/kg dose, increased levels of Aβ1-38 and Aβ1-37 by 1.8 and 5 fold.</td> </tr> </table>	Animal Model:	Beague dog model <sup>[1]</sup>	Dosage:	2-30 mg/kg	Administration:	po, single dose	Result:	Reduced levels of Aβ1-42 and Aβ1-40 of 65% with 30 mg/kg dose, increased levels of Aβ1-38 and Aβ1-37 by 1.8 and 5 fold.
Animal Model:	Beague dog model <sup>[1]</sup>								
Dosage:	2-30 mg/kg								
Administration:	po, single dose								
Result:	Reduced levels of Aβ1-42 and Aβ1-40 of 65% with 30 mg/kg dose, increased levels of Aβ1-38 and Aβ1-37 by 1.8 and 5 fold.								

### REFERENCES

[1]. Toyn JH, et al., Robust Translation of γ-Secretase Modulator Pharmacology across Preclinical Species and Human Subjects. J Pharmacol Exp Ther. 2016 Jul;358(1):125-37.

**Caution: Product has not been fully validated for medical applications. For research use only.**

Tel: 609-228-6898

Fax: 609-228-5909

E-mail: tech@MedChemExpress.com

Address: 1 Deer Park Dr, Suite Q, Monmouth Junction, NJ 08852, USA