



SZABO SCANDIC

Part of Europa Biosite

Produktinformation



Forschungsprodukte & Biochemikalien



Zellkultur & Verbrauchsmaterial



Diagnostik & molekulare Diagnostik



Laborgeräte & Service

Weitere Information auf den folgenden Seiten!
See the following pages for more information!



Lieferung & Zahlungsart

siehe unsere [Liefer- und Versandbedingungen](#)

Zuschläge

- Mindermengenzuschlag
- Trockeneiszuschlag
- Gefahrgutzuschlag
- Expressversand

SZABO-SCANDIC HandelsgmbH

Quellenstraße 110, A-1100 Wien

T. +43(0)1 489 3961-0

F. +43(0)1 489 3961-7

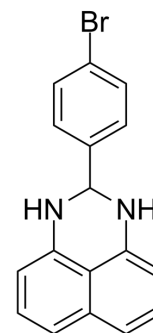
mail@szabo-scandic.com

www.szabo-scandic.com

[linkedin.com/company/szaboscandic](https://www.linkedin.com/company/szaboscandic) 

Hepln-13

Cat. No.:	HY-118134
CAS No.:	64369-13-7
Molecular Formula:	C ₁₇ H ₁₃ BrN ₂
Molecular Weight:	325.2
Target:	Others
Pathway:	Others
Storage:	4°C, protect from light * In solvent : -80°C, 6 months; -20°C, 1 month (protect from light)



SOLVENT & SOLUBILITY

In Vitro	DMSO : 62.5 mg/mL (192.19 mM; Need ultrasonic)					
	Preparing Stock Solutions	Solvent Concentration	Mass			
			1 mg	5 mg	10 mg	
			1 mM	3.0750 mL	15.3752 mL	30.7503 mL
			5 mM	0.6150 mL	3.0750 mL	6.1501 mL
10 mM	0.3075 mL	1.5375 mL	3.0750 mL			
Please refer to the solubility information to select the appropriate solvent.						
In Vivo	1. Add each solvent one by one: 10% DMSO >> 40% PEG300 >> 5% Tween-80 >> 45% saline Solubility: ≥ 2.08 mg/mL (6.40 mM); Clear solution					

BIOLOGICAL ACTIVITY

Description	Hepln-13 is a potent and orally active Hepsin inhibitor with an IC ₅₀ of 0.33 μM. Hepln-13 can be used for the research of metastatic prostate cancer ^[1] .	
IC ₅₀ & Target	IC50: 0.33 μM (Hepsin)	
In Vitro	Hepln-13 (10 μM; 2 hours; 293 cells) inhibits cleavage ^[1] . MCE has not independently confirmed the accuracy of these methods. They are for reference only. Western Blot Analysis ^[1]	
	Cell Line:	293 cells
	Concentration:	10 μM
	Incubation Time:	2 hours

	Result:	Inhibited cleavage.
In Vivo	HepIn-13 displays dose dependent inhibition of Hepsin overexpression-relevant prostate cancer phenotypes and blocks prostate cancer metastasis ^[1] . MCE has not independently confirmed the accuracy of these methods. They are for reference only.	

REFERENCES

[1]. Tang X, et al. Targeted inhibition of cell-surface serine protease Hepsin blocks prostate cancer bone metastasis. *Oncotarget*. 2014;5(5):1352-1362.

Caution: Product has not been fully validated for medical applications. For research use only.

Tel: 609-228-6898

Fax: 609-228-5909

E-mail: tech@MedChemExpress.com

Address: 1 Deer Park Dr, Suite Q, Monmouth Junction, NJ 08852, USA