



SZABO SCANDIC

Part of Europa Biosite

Produktinformation



Forschungsprodukte & Biochemikalien



Zellkultur & Verbrauchsmaterial



Diagnostik & molekulare Diagnostik



Laborgeräte & Service

Weitere Information auf den folgenden Seiten!
See the following pages for more information!



Lieferung & Zahlungsart

siehe unsere [Liefer- und Versandbedingungen](#)

Zuschläge

- Mindermengenzuschlag
- Trockeneiszuschlag
- Gefahrgutzuschlag
- Expressversand

SZABO-SCANDIC HandelsgmbH

Quellenstraße 110, A-1100 Wien

T. +43(0)1 489 3961-0

F. +43(0)1 489 3961-7

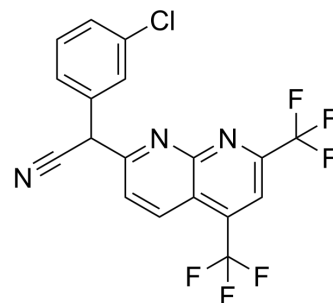
mail@szabo-scandic.com

www.szabo-scandic.com

[linkedin.com/company/szaboscandic](https://www.linkedin.com/company/szaboscandic) 

AMDE-1

Cat. No.:	HY-119137		
CAS No.:	478043-30-0		
Molecular Formula:	C ₁₈ H ₈ ClF ₆ N ₃		
Molecular Weight:	415.72		
Target:	Autophagy; AMPK		
Pathway:	Autophagy; Epigenetics; PI3K/Akt/mTOR		
Storage:	Powder	-20°C	3 years
		4°C	2 years
	In solvent	-80°C	6 months
		-20°C	1 month



SOLVENT & SOLUBILITY

In Vitro	DMSO : 100 mg/mL (240.55 mM; Need ultrasonic)			
		Solvent Concentration	Mass	
			1 mg	5 mg
			10 mg	
Preparing Stock Solutions	1 mM	2.4055 mL	12.0273 mL	24.0547 mL
	5 mM	0.4811 mL	2.4055 mL	4.8109 mL
	10 mM	0.2405 mL	1.2027 mL	2.4055 mL
Please refer to the solubility information to select the appropriate solvent.				
In Vivo	1. Add each solvent one by one: 10% DMSO >> 90% corn oil Solubility: 2.5 mg/mL (6.01 mM); Clear solution; Need ultrasonic and warming and heat to 60°C			

BIOLOGICAL ACTIVITY

Description	AMDE-1 is a potent autophagy inducer. AMDE-1 induces autophagy by the AMPK-mTORC1-ULK1 pathway and at the same time inhibited autophagy-mediated degradation by causing lysosome dysfunction. AMDE-1 can be used in research of cancer ^[1] .
--------------------	---

REFERENCES

[1]. Li M, et, al. AMDE-1 is a dual function chemical for autophagy activation and inhibition. PLoS One. 2015 Apr 20;10(3):e0122083.

Caution: Product has not been fully validated for medical applications. For research use only.

Tel: 609-228-6898

Fax: 609-228-5909

E-mail: tech@MedChemExpress.com

Address: 1 Deer Park Dr, Suite Q, Monmouth Junction, NJ 08852, USA