



# SZABO SCANDIC

Part of Europa Biosite

## Produktinformation



Forschungsprodukte & Biochemikalien



Zellkultur & Verbrauchsmaterial



Diagnostik & molekulare Diagnostik



Laborgeräte & Service

Weitere Information auf den folgenden Seiten!  
See the following pages for more information!



### Lieferung & Zahlungsart

siehe unsere [Liefer- und Versandbedingungen](#)

### Zuschläge

- Mindermengenzuschlag
- Trockeneiszuschlag
- Gefahrgutzuschlag
- Expressversand

### SZABO-SCANDIC HandelsgmbH

Quellenstraße 110, A-1100 Wien

T. +43(0)1 489 3961-0

F. +43(0)1 489 3961-7

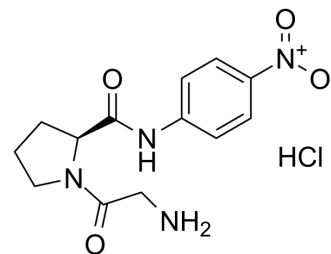
[mail@szabo-scandic.com](mailto:mail@szabo-scandic.com)

[www.szabo-scandic.com](http://www.szabo-scandic.com)

[linkedin.com/company/szaboscandic](https://www.linkedin.com/company/szaboscandic) 

## Gly-Pro-pNA hydrochloride

<b>Cat. No.:</b>	HY-119244
<b>CAS No.:</b>	103213-34-9
<b>Molecular Formula:</b>	C <sub>13</sub> H <sub>17</sub> ClN <sub>4</sub> O <sub>4</sub>
<b>Molecular Weight:</b>	328.75
<b>Target:</b>	Dipeptidyl Peptidase
<b>Pathway:</b>	Metabolic Enzyme/Protease
<b>Storage:</b>	4°C, sealed storage, away from moisture and light * In solvent : -80°C, 6 months; -20°C, 1 month (sealed storage, away from moisture and light)



### SOLVENT & SOLUBILITY

#### In Vitro

DMSO : 125 mg/mL (380.23 mM; Need ultrasonic)

Concentration	Mass		
	1 mg	5 mg	10 mg
1 mM	3.0418 mL	15.2091 mL	30.4182 mL
5 mM	0.6084 mL	3.0418 mL	6.0837 mL
10 mM	0.3042 mL	1.5209 mL	3.0418 mL

Please refer to the solubility information to select the appropriate solvent.

### BIOLOGICAL ACTIVITY

#### Description

Gly-Pro-pNA hydrochloride is a chromogenic substrate that can be cleaved by the circulating enzyme, dipeptidyl peptidase IV (DPP IV). Gly-Pro-pNA can be used to screen for DPP IV inhibitors<sup>[1]</sup>.

### REFERENCES

[1]. Kim YB, et al. Mechanism of Gly-Pro-pNA cleavage catalyzed by dipeptidyl peptidase-IV and its inhibition by saxagliptin (BMS-477118). Arch Biochem Biophys. 2006;445(1):9-18.

**Caution: Product has not been fully validated for medical applications. For research use only.**

Tel: 609-228-6898

Fax: 609-228-5909

E-mail: tech@MedChemExpress.com

Address: 1 Deer Park Dr, Suite Q, Monmouth Junction, NJ 08852, USA