



SZABO SCANDIC

Part of Europa Biosite

Produktinformation



Forschungsprodukte & Biochemikalien



Zellkultur & Verbrauchsmaterial



Diagnostik & molekulare Diagnostik



Laborgeräte & Service

Weitere Information auf den folgenden Seiten!
See the following pages for more information!



Lieferung & Zahlungsart

siehe unsere [Liefer- und Versandbedingungen](#)

Zuschläge

- Mindermengenzuschlag
- Trockeneiszuschlag
- Gefahrgutzuschlag
- Expressversand

SZABO-SCANDIC HandelsgmbH

Quellenstraße 110, A-1100 Wien

T. +43(0)1 489 3961-0

F. +43(0)1 489 3961-7

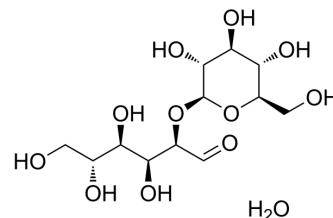
mail@szabo-scandic.com

www.szabo-scandic.com

[linkedin.com/company/szaboscandic](https://www.linkedin.com/company/szaboscandic) 

Sophorose monohydrate

| | |
|--------------------|--|
| Cat. No.: | HY-119445A |
| CAS No.: | 140686-17-5 |
| Molecular Formula: | C ₁₂ H ₂₄ O ₁₂ |
| Molecular Weight: | 360.31 |
| Target: | Biochemical Assay Reagents |
| Pathway: | Others |
| Storage: | -20°C, sealed storage, away from moisture * In solvent : -80°C, 6 months; -20°C, 1 month (sealed storage, away from moisture) |



SOLVENT & SOLUBILITY

In Vitro

H₂O : 125 mg/mL (346.92 mM; Need ultrasonic)

| Preparing Stock Solutions | Solvent Concentration | Mass | | |
|---------------------------|-----------------------|-----------|------------|------------|
| | | 1 mg | 5 mg | 10 mg |
| | 1 mM | 2.7754 mL | 13.8769 mL | 27.7539 mL |
| | 5 mM | 0.5551 mL | 2.7754 mL | 5.5508 mL |
| | 10 mM | 0.2775 mL | 1.3877 mL | 2.7754 mL |

Please refer to the solubility information to select the appropriate solvent.

BIOLOGICAL ACTIVITY

Description

Sophorose (2-O-beta-D-Glucopyranosyl-D-glucopyranose) monohydrate is the disaccharide component of microbial glycolipids, which are often used as biosurfactants due to their hydrophobicity. Sophorolipids also exhibit antibacterial, antifungal, spermicidal, virucidal, and anticancer activities. In studies of *Trichoderma reesei* fermentation, sophorose monohydrate has been identified as a potent inducer of cellulase gene expression^[1].

REFERENCES

[1]. Mandels M, et al. Sophorose as an inducer of cellulase in *Trichoderma viride*[J]. *Journal of Bacteriology*, 1962, 83(2): 400-408.

Caution: Product has not been fully validated for medical applications. For research use only.

Tel: 609-228-6898

Fax: 609-228-5909

E-mail: tech@MedChemExpress.com

Address: 1 Deer Park Dr, Suite Q, Monmouth Junction, NJ 08852, USA