



# SZABO SCANDIC

Part of Europa Biosite

## Produktinformation



Forschungsprodukte & Biochemikalien



Zellkultur & Verbrauchsmaterial



Diagnostik & molekulare Diagnostik



Laborgeräte & Service

Weitere Information auf den folgenden Seiten!  
See the following pages for more information!



### Lieferung & Zahlungsart

siehe unsere [Liefer- und Versandbedingungen](#)

### Zuschläge

- Mindermengenzuschlag
- Trockeneiszuschlag
- Gefahrgutzuschlag
- Expressversand

### SZABO-SCANDIC HandelsgmbH

Quellenstraße 110, A-1100 Wien

T. +43(0)1 489 3961-0

F. +43(0)1 489 3961-7

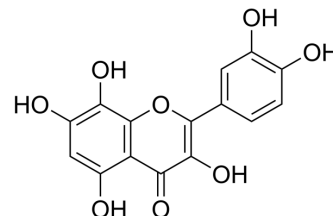
[mail@szabo-scandic.com](mailto:mail@szabo-scandic.com)

[www.szabo-scandic.com](http://www.szabo-scandic.com)

[linkedin.com/company/szaboscandic](https://www.linkedin.com/company/szaboscandic) 

## Gossypetin

|                    |  |
|--------------------|--|
| Cat. No.:          | HY-119917  |
| CAS No.:           | 489-35-0   |
| Molecular Formula: | C <sub>15</sub> H <sub>10</sub> O <sub>8</sub>   |
| Molecular Weight:  | 318.24   |
| Target:            | p38 MAPK; Bacterial; MEK   |
| Pathway:           | MAPK/ERK Pathway; Anti-infection   |
| Storage:           | -20°C, stored under nitrogen<br>* In solvent : -80°C, 6 months; -20°C, 1 month (stored under nitrogen) |



### BIOLOGICAL ACTIVITY

|                                     |  |            |                                   |                |                     |                  |          |         |  |            |                           |                |       |                  |         |         |   |
|-------------------------------------|--|------------|-----------------------------------|----------------|---------------------|------------------|----------|---------|--|------------|---------------------------|----------------|-------|------------------|---------|---------|---|
| <b>Description</b>                  | Gossypetin is a hexahydroxylated flavonoid and is a potent mitogen-activated protein kinase kinase (MKK)3 and MKK6 inhibitor with strongly attenuates the MKK3/6-p38 signaling pathway, has various pharmacological activities, including antioxidant, antibacterial and anticancer activities <sup>[1]</sup> .  |            |                                   |                |                     |                  |          |         |  |            |                           |                |       |                  |         |         |   |
| <b>IC<sub>50</sub> &amp; Target</b> | p38 MAP kinase   |            |                                   |                |                     |                  |          |         |  |            |                           |                |       |                  |         |         |   |
| <b>In Vitro</b>                     | <p>Gossypetin (20-60 μM; 48 hours; KYSE30, KYSE450 and KYSE510 cells) treatment significantly inhibits anchorage-dependent esophageal cancer cell growth in dose dependent manner. Gossypetin strongly suppresses anchorage-independent cell growth in esophageal cancer cells<sup>[1]</sup>.</p> <p>Gossypetin (60 μM; 3 hours; KYSE30 and KYSE410 cells) treatment strongly inhibits p38 activity in a dose-dependent manner and confirms that Gossypetin directly suppresses MKK3 or MKK6 activity<sup>[1]</sup>.</p> <p>Gossypetin (20-40 μM; 48 hours; KYSE450 and KYSE510 cells) treatment reduces S phase and induces G2 phase cell cycle arrest in a dose-dependent manner<sup>[1]</sup>.</p> <p>Gossypetin (20-40 μM; 72 hours; esophageal cancer cells) treatment induces intrinsic apoptosis of esophageal cancer cells<sup>[1]</sup>. MCE has not independently confirmed the accuracy of these methods. They are for reference only.</p> <p>Cell Proliferation Assay<sup>[1]</sup></p> <table border="1"> <tr> <td>Cell Line:</td> <td>KYSE30, KYSE450 and KYSE510 cells</td> </tr> <tr> <td>Concentration:</td> <td>20 μM, 40 μM, 60 μM</td> </tr> <tr> <td>Incubation Time:</td> <td>48 hours</td> </tr> <tr> <td>Result:</td> <td>Anchorage-dependent esophageal cancer cell growth was significantly inhibited.</td> </tr> </table> <p>Western Blot Analysis<sup>[1]</sup></p> <table border="1"> <tr> <td>Cell Line:</td> <td>KYSE30 and KYSE410 ccells</td> </tr> <tr> <td>Concentration:</td> <td>60 μM</td> </tr> <tr> <td>Incubation Time:</td> <td>3 hours</td> </tr> <tr> <td>Result:</td> <td>p38 activity was strongly inhibited in a dose-dependent manner.</td> </tr> </table> | Cell Line: | KYSE30, KYSE450 and KYSE510 cells | Concentration: | 20 μM, 40 μM, 60 μM | Incubation Time: | 48 hours | Result: | Anchorage-dependent esophageal cancer cell growth was significantly inhibited. | Cell Line: | KYSE30 and KYSE410 ccells | Concentration: | 60 μM | Incubation Time: | 3 hours | Result: | p38 activity was strongly inhibited in a dose-dependent manner. |
| Cell Line:                          | KYSE30, KYSE450 and KYSE510 cells  |            |                                   |                |                     |                  |          |         |  |            |                           |                |       |                  |         |         |   |
| Concentration:                      | 20 μM, 40 μM, 60 μM  |            |                                   |                |                     |                  |          |         |  |            |                           |                |       |                  |         |         |   |
| Incubation Time:                    | 48 hours   |            |                                   |                |                     |                  |          |         |  |            |                           |                |       |                  |         |         |   |
| Result:                             | Anchorage-dependent esophageal cancer cell growth was significantly inhibited.   |            |                                   |                |                     |                  |          |         |  |            |                           |                |       |                  |         |         |   |
| Cell Line:                          | KYSE30 and KYSE410 ccells  |            |                                   |                |                     |                  |          |         |  |            |                           |                |       |                  |         |         |   |
| Concentration:                      | 60 μM  |            |                                   |                |                     |                  |          |         |  |            |                           |                |       |                  |         |         |   |
| Incubation Time:                    | 3 hours  |            |                                   |                |                     |                  |          |         |  |            |                           |                |       |                  |         |         |   |
| Result:                             | p38 activity was strongly inhibited in a dose-dependent manner.  |            |                                   |                |                     |                  |          |         |  |            |                           |                |       |                  |         |         |   |

#### Cell Cycle Analysis<sup>[1]</sup>

|                  |  |
|------------------|--|
| Cell Line:       | KYSE450 and KYSE510 cells  |
| Concentration:   | 20 $\mu$ M, 40 $\mu$ M   |
| Incubation Time: | 48 hours   |
| Result:          | Reduced S phase and induces G2 phase cell cycle arrest in a dose-dependent manner. |

#### Apoptosis Analysis<sup>[1]</sup>

|                  |   |
|------------------|---|
| Cell Line:       | Esophageal cancer cells                       |
| Concentration:   | 20 $\mu$ M, 40 $\mu$ M                        |
| Incubation Time: | 72 hours                                      |
| Result:          | Induced apoptosis of esophageal cancer cells. |

#### In Vivo

Gossypetin (100 mg/kg; oral administration; 5 times per week; for 21 days; severe combined immunodeficiency (SCID) female mice) treatment significantly decreases the volume of esophageal tumor growth and without significant loss of body weight. The expression of Ki67 is significantly decreased by Gossypetin. There are no obvious morphological differences between tissues from treated or untreated mic. The phosphorylation of p38, the direct downstream protein of MKK3/6 strongly inhibited in the Gossypetin-treated group<sup>[1]</sup>.

MCE has not independently confirmed the accuracy of these methods. They are for reference only.

|                 |  |
|-----------------|--|
| Animal Model:   | Severe combined immunodeficiency (SCID) female mice (6-9 weeks old) injection with esophageal cancer tissue <sup>[1]</sup> |
| Dosage:         | 100 mg/kg  |
| Administration: | Oral administration; 5 times per week; for 21 days   |
| Result:         | Suppressed patient-derived esophageal xenograft tumor growth in an in vivo mouse model.                                    |

## REFERENCES

[1]. Xie X, et al. Gossypetin is a novel MKK3 and MKK6 inhibitor that suppresses esophageal cancer growth in vitro and in vivo. *Cancer Lett.* 2019 Feb 1;442:126-136.

**Caution: Product has not been fully validated for medical applications. For research use only.**

Tel: 609-228-6898

Fax: 609-228-5909

E-mail: tech@MedChemExpress.com

Address: 1 Deer Park Dr, Suite Q, Monmouth Junction, NJ 08852, USA