



# SZABO SCANDIC

Part of Europa Biosite

## Produktinformation



Forschungsprodukte & Biochemikalien



Zellkultur & Verbrauchsmaterial



Diagnostik & molekulare Diagnostik



Laborgeräte & Service

Weitere Information auf den folgenden Seiten!  
See the following pages for more information!



### Lieferung & Zahlungsart

siehe unsere [Liefer- und Versandbedingungen](#)

### Zuschläge

- Mindermengenzuschlag
- Trockeneiszuschlag
- Gefahrgutzuschlag
- Expressversand

### SZABO-SCANDIC HandelsgmbH

Quellenstraße 110, A-1100 Wien

T. +43(0)1 489 3961-0

F. +43(0)1 489 3961-7

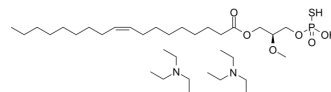
[mail@szabo-scandic.com](mailto:mail@szabo-scandic.com)

[www.szabo-scandic.com](http://www.szabo-scandic.com)

[linkedin.com/company/szaboscandic](https://www.linkedin.com/company/szaboscandic) 

## (2S)-OMPT (triethylamine), in ethanol:chloroform (1:1), 98%

Cat. No.:	HY-120967
CAS No.:	1217471-69-6
Molecular Formula:	C <sub>34</sub> H <sub>73</sub> N <sub>2</sub> O <sub>6</sub> PS
Molecular Weight:	668.99
Target:	Biochemical Assay Reagents
Pathway:	Others
Storage:	Solution, -20°C, 2 years



### BIOLOGICAL ACTIVITY

<b>Description</b>	(2S)-OMPT (triethylamine), in ethanol:chloroform (1:1), 98%, is commonly used as a ligand in asymmetric catalysis, especially in the enantioselective synthesis of bioactive molecules such as amino acids and drugs. (2S)-OMPT triethylamine has unique chemical properties that allow it to selectively bind certain metal complexes and activate them in a way that favors the formation of specific enantiomers.
<b>In Vitro</b>	(2S)-OMPT (triethylamine), in ethanol:chloroform (1:1), 98%, a solution in ethanol:chloroform (1:1), 98% is a biochemical reagent that can be used as a biological material or organic compound for life science related research. MCE has not independently confirmed the accuracy of these methods. They are for reference only.

**Caution: Product has not been fully validated for medical applications. For research use only.**

Tel: 609-228-6898

Fax: 609-228-5909

E-mail: [tech@MedChemExpress.com](mailto:tech@MedChemExpress.com)

Address: 1 Deer Park Dr, Suite Q, Monmouth Junction, NJ 08852, USA