



SZABO SCANDIC

Part of Europa Biosite

Produktinformation



Forschungsprodukte & Biochemikalien



Zellkultur & Verbrauchsmaterial



Diagnostik & molekulare Diagnostik



Laborgeräte & Service

Weitere Information auf den folgenden Seiten!
See the following pages for more information!



Lieferung & Zahlungsart

siehe unsere [Liefer- und Versandbedingungen](#)

Zuschläge

- Mindermengenzuschlag
- Trockeneiszuschlag
- Gefahrgutzuschlag
- Expressversand

SZABO-SCANDIC HandelsgmbH

Quellenstraße 110, A-1100 Wien

T. +43(0)1 489 3961-0

F. +43(0)1 489 3961-7

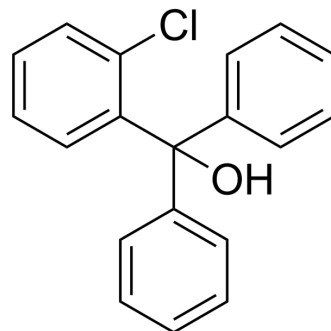
mail@szabo-scandic.com

www.szabo-scandic.com

[linkedin.com/company/szaboscandic](https://www.linkedin.com/company/szaboscandic) 

(2-Chlorophenyl)diphenylmethanol

Cat. No.:	HY-121914
CAS No.:	66774-02-5
Molecular Formula:	C ₁₉ H ₁₅ ClO
Molecular Weight:	294.77
Target:	Calcium Channel
Pathway:	Membrane Transporter/Ion Channel; Neuronal Signaling
Storage:	Please store the product under the recommended conditions in the Certificate of Analysis.



BIOLOGICAL ACTIVITY

Description

(2-Chlorophenyl)diphenylmethanol (UCL 1880) is an analog of the metabolite 2-chlorophen-diphenyl-methanol (CBM) of 2-chlorophenyl. The IC₅₀ for sl(AHP) inhibition is 1-2 μM. (2-chlorophenyl)diphenylmethanol is a weak Ca²⁺ channel blocker^[1].

REFERENCES

[1]. Shah MM, et al. Clotrimazole analogues: effective blockers of the slow afterhyperpolarization in cultured rat hippocampal pyramidal neurones. Br J Pharmacol. 2001 Feb;132(4):889-98.

Caution: Product has not been fully validated for medical applications. For research use only.

Tel: 609-228-6898

Fax: 609-228-5909

E-mail: tech@MedChemExpress.com

Address: 1 Deer Park Dr, Suite Q, Monmouth Junction, NJ 08852, USA