



SZABO SCANDIC

Part of Europa Biosite

Produktinformation



Forschungsprodukte & Biochemikalien



Zellkultur & Verbrauchsmaterial



Diagnostik & molekulare Diagnostik



Laborgeräte & Service

Weitere Information auf den folgenden Seiten!
See the following pages for more information!



Lieferung & Zahlungsart

siehe unsere [Liefer- und Versandbedingungen](#)

Zuschläge

- Mindermengenzuschlag
- Trockeneiszuschlag
- Gefahrgutzuschlag
- Expressversand

SZABO-SCANDIC HandelsgmbH

Quellenstraße 110, A-1100 Wien

T. +43(0)1 489 3961-0

F. +43(0)1 489 3961-7

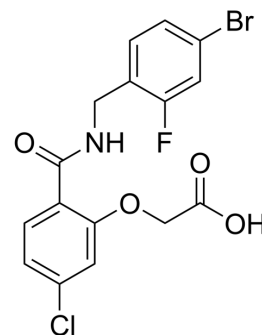
mail@szabo-scandic.com

www.szabo-scandic.com

[linkedin.com/company/szaboscandic](https://www.linkedin.com/company/szaboscandic) 

IDD388

| | |
|--------------------|--|
| Cat. No.: | HY-121933 |
| CAS No.: | 314297-26-2 |
| Molecular Formula: | C ₁₆ H ₁₂ BrClFNO ₄ |
| Molecular Weight: | 416.63 |
| Target: | Aldose Reductase |
| Pathway: | Metabolic Enzyme/Protease |
| Storage: | 4°C, protect from light * In solvent : -80°C, 6 months; -20°C, 1 month (protect from light) |



SOLVENT & SOLUBILITY

In Vitro

DMSO : 125 mg/mL (300.03 mM; Need ultrasonic)

| Concentration | Mass | | | |
|---------------|-----------|------------|------------|--|
| | 1 mg | 5 mg | 10 mg | |
| 1 mM | 2.4002 mL | 12.0011 mL | 24.0021 mL | |
| 5 mM | 0.4800 mL | 2.4002 mL | 4.8004 mL | |
| 10 mM | 0.2400 mL | 1.2001 mL | 2.4002 mL | |

Please refer to the solubility information to select the appropriate solvent.

BIOLOGICAL ACTIVITY

Description

IDD388 is a selective aldose reductase (ALR2) inhibitor with an IC₅₀ of 30 nM. IDD388 displays selectivity for ALR2 over ALR1 (IC₅₀ of 14 μM)^[1].

IC₅₀ & Target

IC₅₀: 30 nM (ALR2)^[1]

REFERENCES

[1]. Holger Steuber, et al. Merging the binding sites of aldose and aldehyde reductase for detection of inhibitor selectivity-determining features. J Mol Biol. 2008 Jun 20;379(5):991-1016.

Caution: Product has not been fully validated for medical applications. For research use only.

Tel: 609-228-6898

Fax: 609-228-5909

E-mail: tech@MedChemExpress.com

Address: 1 Deer Park Dr, Suite Q, Monmouth Junction, NJ 08852, USA