



SZABO SCANDIC

Part of Europa Biosite

Produktinformation



Forschungsprodukte & Biochemikalien



Zellkultur & Verbrauchsmaterial



Diagnostik & molekulare Diagnostik



Laborgeräte & Service

Weitere Information auf den folgenden Seiten!
See the following pages for more information!



Lieferung & Zahlungsart

siehe unsere [Liefer- und Versandbedingungen](#)

Zuschläge

- Mindermengenzuschlag
- Trockeneiszuschlag
- Gefahrgutzuschlag
- Expressversand

SZABO-SCANDIC HandelsgmbH

Quellenstraße 110, A-1100 Wien

T. +43(0)1 489 3961-0

F. +43(0)1 489 3961-7

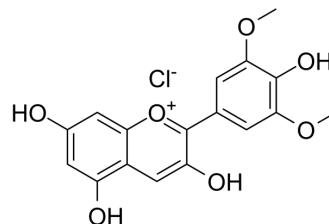
mail@szabo-scandic.com

www.szabo-scandic.com

[linkedin.com/company/szaboscandic](https://www.linkedin.com/company/szaboscandic) 

Malvidin chloride

Cat. No.:	HY-122496
CAS No.:	643-84-5
Molecular Formula:	C ₁₇ H ₁₅ ClO ₇
Molecular Weight:	366.75
Target:	Apoptosis
Pathway:	Apoptosis
Storage:	4°C, sealed storage, away from moisture and light * In solvent : -80°C, 6 months; -20°C, 1 month (sealed storage, away from moisture and light)



SOLVENT & SOLUBILITY

In Vitro

DMSO : ≥ 16 mg/mL (43.63 mM)
* "≥" means soluble, but saturation unknown.

Preparing Stock Solutions	Solvent		Mass		
	Concentration		1 mg	5 mg	10 mg
	1 mM		2.7267 mL	13.6333 mL	27.2665 mL
	5 mM		0.5453 mL	2.7267 mL	5.4533 mL
	10 mM		0.2727 mL	1.3633 mL	2.7267 mL

Please refer to the solubility information to select the appropriate solvent.

BIOLOGICAL ACTIVITY

Description

Malvidin (chloride) is a bioactive compound isolated from grape. Malvidin shows cytotoxicity through the arrest of the G₂/M phase of cell cycle and induction of apoptosis. Malvidin can be used for the research of cancer^[1].

In Vitro

Malvidin (0~80 µg/mL; 96 hours; U937 cells) shows cytotoxic activity in a dose-dependent pattern^[1]. The IC₅₀ value of Malvidin for U937 cells is 40 µg/mL. Malvidin (U937 cells) shows arrest at the G₂/M phase of the cell cycle and increases sub G₁ hypo-diploid population^[1].
MCE has not independently confirmed the accuracy of these methods. They are for reference only.
Cell Viability Assay^[1]

Cell Line:	U937 cells
Concentration:	0~80 µg/mL
Incubation Time:	96 hours
Result:	Showed cytotoxic activity in a dose-dependent pattern.

REFERENCES

[1]. Jin W H, et al. Cyanidin and Malvidin from *Oryza sativa* cv. Heugjinjubyeo Mediate Cytotoxicity against Human Monocytic Leukemia Cells by Arrest of G2/M Phase and Induction of Apoptosis. *J. Agric. Food Chem.* 2004, 52, 8, 2213–2217

Caution: Product has not been fully validated for medical applications. For research use only.

Tel: 609-228-6898

Fax: 609-228-5909

E-mail: tech@MedChemExpress.com

Address: 1 Deer Park Dr, Suite Q, Monmouth Junction, NJ 08852, USA