



# SZABO SCANDIC

Part of Europa Biosite

## Produktinformation



Forschungsprodukte & Biochemikalien



Zellkultur & Verbrauchsmaterial



Diagnostik & molekulare Diagnostik



Laborgeräte & Service

Weitere Information auf den folgenden Seiten!  
See the following pages for more information!



### Lieferung & Zahlungsart

siehe unsere [Liefer- und Versandbedingungen](#)

### Zuschläge

- Mindermengenzuschlag
- Trockeneiszuschlag
- Gefahrgutzuschlag
- Expressversand

### SZABO-SCANDIC HandelsgmbH

Quellenstraße 110, A-1100 Wien

T. +43(0)1 489 3961-0

F. +43(0)1 489 3961-7

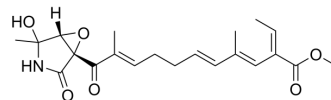
[mail@szabo-scandic.com](mailto:mail@szabo-scandic.com)

[www.szabo-scandic.com](http://www.szabo-scandic.com)

[linkedin.com/company/szaboscandic](https://www.linkedin.com/company/szaboscandic) 

## Epolactaene

<b>Cat. No.:</b>	HY-124552
<b>CAS No.:</b>	167782-17-4
<b>Molecular Formula:</b>	C <sub>21</sub> H <sub>27</sub> NO <sub>6</sub>
<b>Molecular Weight:</b>	389.44
<b>Target:</b>	DNA/RNA Synthesis; Topoisomerase
<b>Pathway:</b>	Cell Cycle/DNA Damage
<b>Storage:</b>	Please store the product under the recommended conditions in the Certificate of Analysis.



### BIOLOGICAL ACTIVITY

<b>Description</b>	Epolactaene is a potent Topoisomerase II and DNA Polymerase inhibitor with IC <sub>50</sub> values of 10, 25, 94 μM for Topoisomerase II, DNA Polymerase α, DNA Polymerase β, respectively <sup>[1]</sup> .		
<b>IC<sub>50</sub> &amp; Target</b>	Topoisomerase II 10 μM (IC <sub>50</sub> )	DNA Polymerase α 25 μM (IC <sub>50</sub> )	DNA Polymerase β 94 μM (IC <sub>50</sub> )

### REFERENCES

[1]. Mizushima Y, et al. Epolactaene, a novel neuritogenic compound in human neuroblastoma cells, selectively inhibits the activities of mammalian DNA polymerases and human DNA topoisomerase II. *Biochem Biophys Res Commun.* 2000 Jul 5;273(2):784-8.

**Caution: Product has not been fully validated for medical applications. For research use only.**

Tel: 609-228-6898

Fax: 609-228-5909

E-mail: tech@MedChemExpress.com

Address: 1 Deer Park Dr, Suite Q, Monmouth Junction, NJ 08852, USA