



SZABO SCANDIC

Part of Europa Biosite

Produktinformation



Forschungsprodukte & Biochemikalien



Zellkultur & Verbrauchsmaterial



Diagnostik & molekulare Diagnostik



Laborgeräte & Service

Weitere Information auf den folgenden Seiten!
See the following pages for more information!



Lieferung & Zahlungsart

siehe unsere [Liefer- und Versandbedingungen](#)

Zuschläge

- Mindermengenzuschlag
- Trockeneiszuschlag
- Gefahrgutzuschlag
- Expressversand

SZABO-SCANDIC HandelsgmbH

Quellenstraße 110, A-1100 Wien

T. +43(0)1 489 3961-0

F. +43(0)1 489 3961-7

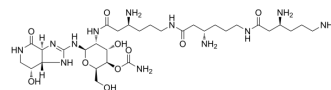
mail@szabo-scandic.com

www.szabo-scandic.com

[linkedin.com/company/szaboscandic](https://www.linkedin.com/company/szaboscandic) 

Racemomycin B

Cat. No.:	HY-125048
CAS No.:	3776-37-2
Molecular Formula:	C ₃₁ H ₅₈ N ₁₂ O ₁₀
Molecular Weight:	758.87
Target:	Bacterial
Pathway:	Anti-infection
Storage:	Please store the product under the recommended conditions in the Certificate of Analysis.



BIOLOGICAL ACTIVITY

Description

Racemomycin B (229-B; Streptothricin D), the main component from *Streptomyces lavendulae* OP-2, is a streptothricin antibiotic containing three β -lysine groups. RM-B exhibits antimicrobial activity against plant pathogenic microorganisms and effectively inhibits the growth of *Brassica rapa* L. roots at 50 ppm. RM-B showed a minimum inhibitory concentration (MIC) of 0.4 $\mu\text{g/ml}$ against *Pseudomonas syringae* pv. *tabaci* IFO-3508 and a MIC range of 0.1-2.0 $\mu\text{g/ml}$ against six strains of *Fusarium oxysporum*, showing stronger antimicrobial activity than RM-A and RM-C. The biological activity of racemomycin compounds increases with the increase in the number of β -lysine groups.

REFERENCES

[1]. Biological Activities of Racemomycin-B, B-Lysine Rich Streptothricin Antibiotic, the Main Component

Caution: Product has not been fully validated for medical applications. For research use only.

Tel: 609-228-6898

Fax: 609-228-5909

E-mail: tech@MedChemExpress.com

Address: 1 Deer Park Dr, Suite Q, Monmouth Junction, NJ 08852, USA