



SZABO SCANDIC

Part of Europa Biosite

Produktinformation



Forschungsprodukte & Biochemikalien



Zellkultur & Verbrauchsmaterial



Diagnostik & molekulare Diagnostik



Laborgeräte & Service

Weitere Information auf den folgenden Seiten!
See the following pages for more information!



Lieferung & Zahlungsart

siehe unsere [Liefer- und Versandbedingungen](#)

Zuschläge

- Mindermengenzuschlag
- Trockeneiszuschlag
- Gefahrgutzuschlag
- Expressversand

SZABO-SCANDIC HandelsgmbH

Quellenstraße 110, A-1100 Wien

T. +43(0)1 489 3961-0

F. +43(0)1 489 3961-7

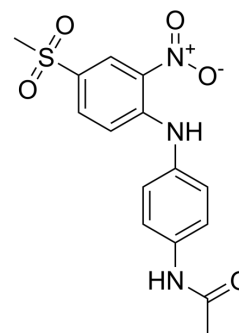
mail@szabo-scandic.com

www.szabo-scandic.com

[linkedin.com/company/szaboscandic](https://www.linkedin.com/company/szaboscandic) 

ALDH3A1-IN-3

Cat. No.:	HY-125085
CAS No.:	315239-63-5
Molecular Formula:	C ₁₅ H ₁₅ N ₃ O ₅ S
Molecular Weight:	349.36
Target:	Aldehyde Dehydrogenase (ALDH)
Pathway:	Metabolic Enzyme/Protease
Storage:	Please store the product under the recommended conditions in the Certificate of Analysis.



BIOLOGICAL ACTIVITY

Description	ALDH3A1-IN-3 (CB29) is a selective inhibitor of ALDH3A1, with a K _i value of 4.7 μM and an IC ₅₀ value of 16 μM. ALDH3A1-IN-3 has no inhibitory potential on the in vitro activity of ALDH1A1, ALDH1A2, ALDH1A3, ALDH1B1, or ALDH2. ALDH3A1-IN-3 can be used in cellular oxidation and cancer research ^[1] .
IC ₅₀ & Target	ALDH3A1 16 μM (IC ₅₀)
In Vitro	ALDH3A1-IN-3 (CB29) (50 μM, 3 min) significantly inhibits ALDH3A1 activity in A549 and SF767 cells ^[1] . MCE has not independently confirmed the accuracy of these methods. They are for reference only.

REFERENCES

[1]. Parajuli B, et al. Development of selective inhibitors for human aldehyde dehydrogenase 3A1 (ALDH3A1) for the enhancement of cyclophosphamide cytotoxicity. *Chembiochem*. 2014 Mar 21;15(5):701-12.

Caution: Product has not been fully validated for medical applications. For research use only.

Tel: 609-228-6898

Fax: 609-228-5909

E-mail: tech@MedChemExpress.com

Address: 1 Deer Park Dr, Suite Q, Monmouth Junction, NJ 08852, USA