



SZABO SCANDIC

Part of Europa Biosite

Produktinformation



Forschungsprodukte & Biochemikalien



Zellkultur & Verbrauchsmaterial



Diagnostik & molekulare Diagnostik



Laborgeräte & Service

Weitere Information auf den folgenden Seiten!
See the following pages for more information!



Lieferung & Zahlungsart

siehe unsere [Liefer- und Versandbedingungen](#)

Zuschläge

- Mindermengenzuschlag
- Trockeneiszuschlag
- Gefahrgutzuschlag
- Expressversand

SZABO-SCANDIC HandelsgmbH

Quellenstraße 110, A-1100 Wien

T. +43(0)1 489 3961-0

F. +43(0)1 489 3961-7

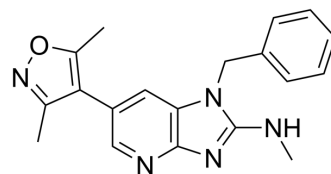
mail@szabo-scandic.com

www.szabo-scandic.com

[linkedin.com/company/szaboscandic](https://www.linkedin.com/company/szaboscandic) 

BET-IN-19

Cat. No.:	HY-125236		
CAS No.:	1643947-30-1		
Molecular Formula:	C ₁₉ H ₁₉ N ₅ O		
Molecular Weight:	333.39		
Target:	Epigenetic Reader Domain		
Pathway:	Epigenetics		
Storage:	Powder	-20°C	3 years
	In solvent	-80°C	6 months
		-20°C	1 month



SOLVENT & SOLUBILITY

In Vitro

DMSO : 100 mg/mL (299.95 mM; Need ultrasonic)

Concentration	Mass		
	1 mg	5 mg	10 mg
1 mM	2.9995 mL	14.9974 mL	29.9949 mL
5 mM	0.5999 mL	2.9995 mL	5.9990 mL
10 mM	0.2999 mL	1.4997 mL	2.9995 mL

Please refer to the solubility information to select the appropriate solvent.

In Vivo

- Add each solvent one by one: 10% DMSO >> 40% PEG300 >> 5% Tween-80 >> 45% saline
Solubility: ≥ 2.5 mg/mL (7.50 mM); Clear solution
- Add each solvent one by one: 10% DMSO >> 90% (20% SBE-β-CD in saline)
Solubility: ≥ 2.5 mg/mL (7.50 mM); Clear solution
- Add each solvent one by one: 10% DMSO >> 90% corn oil
Solubility: ≥ 2.5 mg/mL (7.50 mM); Clear solution

BIOLOGICAL ACTIVITY

Description

BET-IN-19 (Compound 146) is a BET inhibitor. BET-IN-19 inhibits hLL-6 mRNA transcription ($IC_{50} \leq 0.3 \mu M$), and c-myc activity in human AML MV4-11 cell ($IC_{50} \leq 0.3 \mu M$). BET-IN-19 inhibits tetra-acetylated histone H4 binding to BRD4 bromodomain 1 ($IC_{50} \leq 0.3 \mu M$)^[1].

REFERENCES

Caution: Product has not been fully validated for medical applications. For research use only.

Tel: 609-228-6898

Fax: 609-228-5909

E-mail: tech@MedChemExpress.com

Address: 1 Deer Park Dr, Suite Q, Monmouth Junction, NJ 08852, USA