



SZABO SCANDIC

Part of Europa Biosite

Produktinformation



Forschungsprodukte & Biochemikalien



Zellkultur & Verbrauchsmaterial



Diagnostik & molekulare Diagnostik



Laborgeräte & Service

Weitere Information auf den folgenden Seiten!
See the following pages for more information!



Lieferung & Zahlungsart

siehe unsere [Liefer- und Versandbedingungen](#)

Zuschläge

- Mindermengenzuschlag
- Trockeneiszuschlag
- Gefahrgutzuschlag
- Expressversand

SZABO-SCANDIC HandelsgmbH

Quellenstraße 110, A-1100 Wien

T. +43(0)1 489 3961-0

F. +43(0)1 489 3961-7

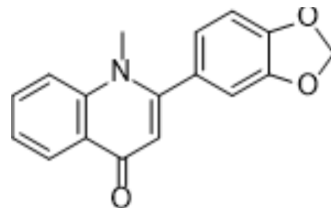
mail@szabo-scandic.com

www.szabo-scandic.com

[linkedin.com/company/szaboscandic](https://www.linkedin.com/company/szaboscandic) 

Graveoline

Cat. No.:	HY-12538		
CAS No.:	485-61-0		
Molecular Formula:	C ₁₇ H ₁₃ NO ₃		
Molecular Weight:	279.29		
Target:	Apoptosis; Fungal; Autophagy		
Pathway:	Apoptosis; Anti-infection; Autophagy		
Storage:	Powder	-20°C	3 years
		4°C	2 years
	In solvent	-80°C	6 months
		-20°C	1 month



SOLVENT & SOLUBILITY

In Vitro

DMSO : 20 mg/mL (71.61 mM; ultrasonic and warming and heat to 60°C)

Concentration	Solvent	Mass	1 mg			5 mg			10 mg		
			Concentration			Concentration			Concentration		
1 mM			3.5805 mL			17.9025 mL			35.8051 mL		
5 mM			0.7161 mL			3.5805 mL			7.1610 mL		
10 mM			0.3581 mL			1.7903 mL			3.5805 mL		

Please refer to the solubility information to select the appropriate solvent.

In Vivo

- Add each solvent one by one: 10% DMSO >> 40% PEG300 >> 5% Tween-80 >> 45% saline
Solubility: ≥ 1 mg/mL (3.58 mM); Clear solution
- Add each solvent one by one: 10% DMSO >> 90% (20% SBE-β-CD in saline)
Solubility: ≥ 1 mg/mL (3.58 mM); Clear solution
- Add each solvent one by one: 10% DMSO >> 90% corn oil
Solubility: ≥ 1 mg/mL (3.58 mM); Clear solution

BIOLOGICAL ACTIVITY

Description

Graveoline (Rutamine) is an anti-cancer agent that can trigger apoptosis and autophagy in skin melanoma cells. Graveoline also exhibits antifungal activity^[1].

REFERENCES

- [1]. Ghosh S, et, al. Graveoline isolated from ethanolic extract of *Ruta graveolens* triggers apoptosis and autophagy in skin melanoma cells: a novel apoptosis-independent

autophagic signaling pathway. *Phytother Res.* 2014 Aug;28(8):1153-62.

[2]. Kamal LZM, et, al. Identification of Alkaloid Compounds Arborinine and Graveoline from *Ruta angustifolia* (L.) Pers for their Antifungal Potential against Isocitrate lyase (ICL1) gene of *Candida albicans*. *Mycopathologia.* 2021 May;186(2):221-236.

Caution: Product has not been fully validated for medical applications. For research use only.

Tel: 609-228-6898

Fax: 609-228-5909

E-mail: tech@MedChemExpress.com

Address: 1 Deer Park Dr, Suite Q, Monmouth Junction, NJ 08852, USA