



# SZABO SCANDIC

Part of Europa Biosite

## Produktinformation



Forschungsprodukte & Biochemikalien



Zellkultur & Verbrauchsmaterial



Diagnostik & molekulare Diagnostik



Laborgeräte & Service

Weitere Information auf den folgenden Seiten!  
See the following pages for more information!



### Lieferung & Zahlungsart

siehe unsere [Liefer- und Versandbedingungen](#)

### Zuschläge

- Mindermengenzuschlag
- Trockeneiszuschlag
- Gefahrgutzuschlag
- Expressversand

### SZABO-SCANDIC HandelsgmbH

Quellenstraße 110, A-1100 Wien

T. +43(0)1 489 3961-0

F. +43(0)1 489 3961-7

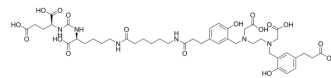
[mail@szabo-scandic.com](mailto:mail@szabo-scandic.com)

[www.szabo-scandic.com](http://www.szabo-scandic.com)

[linkedin.com/company/szaboscandic](https://www.linkedin.com/company/szaboscandic) 

## PSMA-11

Cat. No.:	HY-125399
CAS No.:	1366302-52-4
Molecular Formula:	C <sub>44</sub> H <sub>62</sub> N <sub>6</sub> O <sub>17</sub>
Molecular Weight:	946.99
Target:	PSMA
Pathway:	Immunology/Inflammation
Storage:	-20°C, protect from light * In solvent : -80°C, 6 months; -20°C, 1 month (protect from light)



### SOLVENT & SOLUBILITY

In Vitro	DMSO : 100 mg/mL (105.60 mM; Need ultrasonic)				
	Preparing Stock Solutions	Solvent Concentration \ Mass	1 mg	5 mg	10 mg
		1 mM	1.0560 mL	5.2799 mL	10.5598 mL
		5 mM	0.2112 mL	1.0560 mL	2.1120 mL
		10 mM	0.1056 mL	0.5280 mL	1.0560 mL
Please refer to the solubility information to select the appropriate solvent.					
In Vivo	<ol style="list-style-type: none"> <li>Add each solvent one by one: 10% DMSO &gt;&gt; 40% PEG300 &gt;&gt; 5% Tween-80 &gt;&gt; 45% saline Solubility: ≥ 2.5 mg/mL (2.64 mM); Clear solution</li> <li>Add each solvent one by one: 10% DMSO &gt;&gt; 90% (20% SBE-β-CD in saline) Solubility: ≥ 2.5 mg/mL (2.64 mM); Clear solution</li> <li>Add each solvent one by one: 10% DMSO &gt;&gt; 90% corn oil Solubility: ≥ 2.5 mg/mL (2.64 mM); Clear solution</li> </ol>				

### BIOLOGICAL ACTIVITY

Description	PSMA-11 is a positron emission tomography (PET) tracer. PSMA-11 detects prostate cancer relapses and metastases by binding to the extracellular domain of prostate-specific membrane antigen (PSMA) <sup>[1]</sup> .
-------------	--

### REFERENCES

[1]. Demirci E, et al. Normal distribution pattern and physiological variants of <sup>68</sup>Ga-PSMA-11 PET/CT imaging. Nucl Med Commun. 2016 Nov;37(11):1169-79.

---

**Caution: Product has not been fully validated for medical applications. For research use only.**

Tel: 609-228-6898

Fax: 609-228-5909

E-mail: [tech@MedChemExpress.com](mailto:tech@MedChemExpress.com)

Address: 1 Deer Park Dr, Suite Q, Monmouth Junction, NJ 08852, USA