



SZABO SCANDIC

Part of Europa Biosite

Produktinformation



Forschungsprodukte & Biochemikalien



Zellkultur & Verbrauchsmaterial



Diagnostik & molekulare Diagnostik



Laborgeräte & Service

Weitere Information auf den folgenden Seiten!
See the following pages for more information!



Lieferung & Zahlungsart

siehe unsere [Liefer- und Versandbedingungen](#)

Zuschläge

- Mindermengenzuschlag
- Trockeneiszuschlag
- Gefahrgutzuschlag
- Expressversand

SZABO-SCANDIC HandelsgmbH

Quellenstraße 110, A-1100 Wien

T. +43(0)1 489 3961-0

F. +43(0)1 489 3961-7

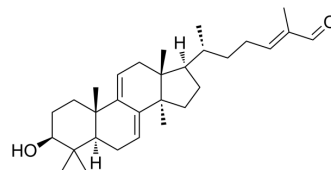
mail@szabo-scandic.com

www.szabo-scandic.com

[linkedin.com/company/szaboscandic](https://www.linkedin.com/company/szaboscandic) 

Lucialdehyde A

Cat. No.:	HY-125443
CAS No.:	420781-84-6
Molecular Formula:	C ₃₀ H ₄₆ O ₂
Molecular Weight:	438.69
Target:	Others
Pathway:	Others
Storage:	4°C, protect from light * In solvent : -80°C, 6 months; -20°C, 1 month (protect from light)



SOLVENT & SOLUBILITY

In Vitro

DMSO : 17.38 mg/mL (39.62 mM; Need ultrasonic and warming)

Preparing Stock Solutions	Solvent		1 mg	5 mg	10 mg
	Concentration	Mass			
	1 mM		2.2795 mL	11.3976 mL	22.7951 mL
	5 mM		0.4559 mL	2.2795 mL	4.5590 mL
	10 mM		0.2280 mL	1.1398 mL	2.2795 mL

Please refer to the solubility information to select the appropriate solvent.

BIOLOGICAL ACTIVITY

Description

Lucialdehydes A is a lanostane-type triterpene aldehydes, isolated from the fruiting bodies of *Ganoderma lucidum*. Lucialdehydes A shows cytotoxic effects on tumor cells, including Lewis lung carcinoma (LLC), T-47D, Sarcoma 180, and Meth-A tumor cell lines^[1].

REFERENCES

[1]. Jiang-Jing Gao, et al. New triterpene aldehydes, lucialdehydes A-C, from *Ganoderma lucidum* and their cytotoxicity against murine and human tumor cells. *Chem Pharm Bull (Tokyo)*. 2002 Jun;50(6):837-40.

Caution: Product has not been fully validated for medical applications. For research use only.

Tel: 609-228-6898

Fax: 609-228-5909

E-mail: tech@MedChemExpress.com

Address: 1 Deer Park Dr, Suite Q, Monmouth Junction, NJ 08852, USA