



SZABO SCANDIC

Part of Europa Biosite

Produktinformation



Forschungsprodukte & Biochemikalien



Zellkultur & Verbrauchsmaterial



Diagnostik & molekulare Diagnostik



Laborgeräte & Service

Weitere Information auf den folgenden Seiten!
See the following pages for more information!



Lieferung & Zahlungsart

siehe unsere [Liefer- und Versandbedingungen](#)

Zuschläge

- Mindermengenzuschlag
- Trockeneiszuschlag
- Gefahrgutzuschlag
- Expressversand

SZABO-SCANDIC HandelsgmbH

Quellenstraße 110, A-1100 Wien

T. +43(0)1 489 3961-0

F. +43(0)1 489 3961-7

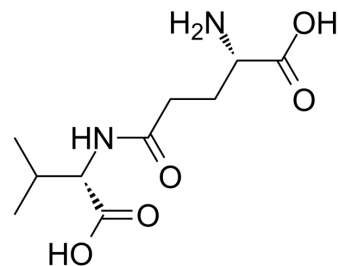
mail@szabo-scandic.com

www.szabo-scandic.com

[linkedin.com/company/szaboscandic](https://www.linkedin.com/company/szaboscandic) 

γ-Glutamylvaline

Cat. No.:	HY-12557
CAS No.:	2746-34-1
Molecular Formula:	C ₁₀ H ₁₈ N ₂ O ₅
Molecular Weight:	246.26
Target:	CaSR; Wnt; TNF Receptor
Pathway:	GPCR/G Protein; Stem Cell/Wnt; Apoptosis
Storage:	Sealed storage, away from moisture
	Powder -80°C 2 years
	-20°C 1 year



* In solvent : -80°C, 6 months; -20°C, 1 month (sealed storage, away from moisture)

SOLVENT & SOLUBILITY

In Vitro

H₂O : ≥ 100 mg/mL (406.07 mM)
 * "≥" means soluble, but saturation unknown.

Concentration	Mass		
	1 mg	5 mg	10 mg
1 mM	4.0607 mL	20.3037 mL	40.6075 mL
5 mM	0.8121 mL	4.0607 mL	8.1215 mL
10 mM	0.4061 mL	2.0304 mL	4.0607 mL

Please refer to the solubility information to select the appropriate solvent.

BIOLOGICAL ACTIVITY

Description

γ-Glutamylvaline is an activator of CaSR with anti-inflammatory activity. γ-Glutamylvaline inhibits TNF-α-induced proinflammatory cytokine production and increases Wnt5a expression. γ-Glutamylvaline activates calcium-sensing receptor pathways in adipocytes of 3T3-L1 mice and prevents low-grade chronic inflammation^[1].

REFERENCES

[1]. Xing L, et al. γ-Glutamylvaline Prevents Low-Grade Chronic Inflammation via Activation of a Calcium-Sensing Receptor Pathway in 3T3-L1 Mouse Adipocytes. *J Agric Food Chem.* 2019 Jul 31;67(30):8361-8369.

Caution: Product has not been fully validated for medical applications. For research use only.

Tel: 609-228-6898

Fax: 609-228-5909

E-mail: tech@MedChemExpress.com

Address: 1 Deer Park Dr, Suite Q, Monmouth Junction, NJ 08852, USA