



SZABO SCANDIC

Part of Europa Biosite

Produktinformation



Forschungsprodukte & Biochemikalien



Zellkultur & Verbrauchsmaterial



Diagnostik & molekulare Diagnostik



Laborgeräte & Service

Weitere Information auf den folgenden Seiten!
See the following pages for more information!



Lieferung & Zahlungsart

siehe unsere [Liefer- und Versandbedingungen](#)

Zuschläge

- Mindermengenzuschlag
- Trockeneiszuschlag
- Gefahrgutzuschlag
- Expressversand

SZABO-SCANDIC HandelsgmbH

Quellenstraße 110, A-1100 Wien

T. +43(0)1 489 3961-0

F. +43(0)1 489 3961-7

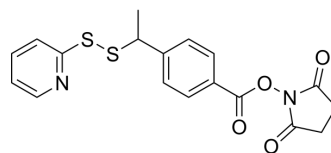
mail@szabo-scandic.com

www.szabo-scandic.com

[linkedin.com/company/szaboscandic](https://www.linkedin.com/company/szaboscandic) 

SMPT

Cat. No.:	HY-126405		
CAS No.:	112241-19-7		
Molecular Formula:	C ₁₈ H ₁₆ N ₂ O ₄ S ₂		
Molecular Weight:	388.46		
Target:	ADC Linker		
Pathway:	Antibody-drug Conjugate/ADC Related		
Storage:	Powder	-20°C	3 years
	In solvent	-80°C	6 months
		-20°C	1 month



SOLVENT & SOLUBILITY

In Vitro	DMSO : 200 mg/mL (514.85 mM; Need ultrasonic)					
	Preparing Stock Solutions	Solvent Concentration	Mass	1 mg	5 mg	10 mg
			1 mM	2.5743 mL	12.8713 mL	25.7427 mL
			5 mM	0.5149 mL	2.5743 mL	5.1485 mL
			10 mM	0.2574 mL	1.2871 mL	2.5743 mL
Please refer to the solubility information to select the appropriate solvent.						
In Vivo	1. Add each solvent one by one: 10% DMSO >> 40% PEG300 >> 5% Tween-80 >> 45% saline Solubility: ≥ 5 mg/mL (12.87 mM); Clear solution					
	2. Add each solvent one by one: 10% DMSO >> 90% corn oil Solubility: ≥ 5 mg/mL (12.87 mM); Clear solution					

BIOLOGICAL ACTIVITY

Description	SMPT is a non-cleavable ADC linker used in the synthesis of antibody-drug conjugates (ADCs) ^[1] .	
IC ₅₀ & Target	Disulfide Cleavable	Non-cleavable
In Vitro	ADCs are comprised of an antibody to which is attached an ADC cytotoxin through an ADC linker ^[1] . MCE has not independently confirmed the accuracy of these methods. They are for reference only.	

REFERENCES

Caution: Product has not been fully validated for medical applications. For research use only.

Tel: 609-228-6898

Fax: 609-228-5909

E-mail: tech@MedChemExpress.com

Address: 1 Deer Park Dr, Suite Q, Monmouth Junction, NJ 08852, USA