



SZABO SCANDIC

Part of Europa Biosite

Produktinformation



Forschungsprodukte & Biochemikalien



Zellkultur & Verbrauchsmaterial



Diagnostik & molekulare Diagnostik



Laborgeräte & Service

Weitere Information auf den folgenden Seiten!
See the following pages for more information!



Lieferung & Zahlungsart

siehe unsere [Liefer- und Versandbedingungen](#)

Zuschläge

- Mindermengenzuschlag
- Trockeneiszuschlag
- Gefahrgutzuschlag
- Expressversand

SZABO-SCANDIC HandelsgmbH

Quellenstraße 110, A-1100 Wien

T. +43(0)1 489 3961-0

F. +43(0)1 489 3961-7

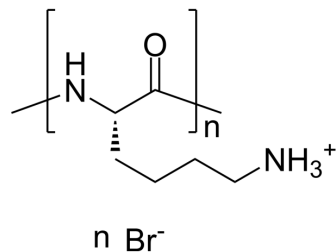
mail@szabo-scandic.com

www.szabo-scandic.com

[linkedin.com/company/szaboscandic](https://www.linkedin.com/company/szaboscandic) 

Poly-L-lysine hydrobromide (MW 15000-30000)

Cat. No.:	HY-126437E
CAS No.:	25988-63-0
Molecular Formula:	C ₈ H ₁₉ BrN ₂ O
Target:	Biochemical Assay Reagents
Pathway:	Others
Storage:	-20°C, sealed storage, away from moisture * In solvent : -80°C, 6 months; -20°C, 1 month (sealed storage, away from moisture)



SOLVENT & SOLUBILITY

In Vitro	H ₂ O : 50 mg/mL (Need ultrasonic and warming)
----------	---

BIOLOGICAL ACTIVITY

Description	Poly-L-lysine (hydrobromide) (MW 15000-30000) can promote cell adhesion to solid-phase substrates. Poly-L-lysine (hydrobromide) (MW 15000-30000) is a kind of biological materials or organic compounds that are widely used in life science research ^[1] .
-------------	--

REFERENCES

[1]. Bergmeyer H U, et al. Biochemical reagents[M]//Methods of Enzymatic Analysis. Academic Press, 1965: 967-1037.

Caution: Product has not been fully validated for medical applications. For research use only.

Tel: 609-228-6898

Fax: 609-228-5909

E-mail: tech@MedChemExpress.com

Address: 1 Deer Park Dr, Suite Q, Monmouth Junction, NJ 08852, USA