



# SZABO SCANDIC

Part of Europa Biosite

## Produktinformation



Forschungsprodukte & Biochemikalien



Zellkultur & Verbrauchsmaterial



Diagnostik & molekulare Diagnostik



Laborgeräte & Service

Weitere Information auf den folgenden Seiten!  
See the following pages for more information!



### Lieferung & Zahlungsart

siehe unsere [Liefer- und Versandbedingungen](#)

### Zuschläge

- Mindermengenzuschlag
- Trockeneiszuschlag
- Gefahrgutzuschlag
- Expressversand

### SZABO-SCANDIC HandelsgmbH

Quellenstraße 110, A-1100 Wien

T. +43(0)1 489 3961-0

F. +43(0)1 489 3961-7

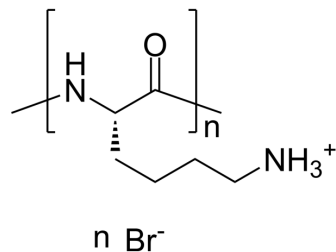
[mail@szabo-scandic.com](mailto:mail@szabo-scandic.com)

[www.szabo-scandic.com](http://www.szabo-scandic.com)

[linkedin.com/company/szaboscandic](https://www.linkedin.com/company/szaboscandic) 

## Poly-L-lysine hydrobromide (MW 4000-15000)

Cat. No.:	HY-126437H
CAS No.:	25988-63-0
Molecular Formula:	C <sub>8</sub> H <sub>19</sub> BrN <sub>2</sub> O
Target:	Biochemical Assay Reagents
Pathway:	Others
Storage:	Please store the product under the recommended conditions in the Certificate of Analysis.



### BIOLOGICAL ACTIVITY

#### Description

Poly-L-lysine (hydrobromide) (MW 4000-15000) can promote cell adhesion to solid-phase substrates. Poly-L-lysine (hydrobromide) (MW 4000-15000) is a kind of biological materials or organic compounds that are widely used in life science research<sup>[1]</sup>.

### REFERENCES

[1]. Bergmeyer H U, et al. Biochemical reagents[M]//Methods of Enzymatic Analysis. Academic Press, 1965: 967-1037.

**Caution: Product has not been fully validated for medical applications. For research use only.**

Tel: 609-228-6898

Fax: 609-228-5909

E-mail: tech@MedChemExpress.com

Address: 1 Deer Park Dr, Suite Q, Monmouth Junction, NJ 08852, USA