



SZABO SCANDIC

Part of Europa Biosite

Produktinformation



Forschungsprodukte & Biochemikalien



Zellkultur & Verbrauchsmaterial



Diagnostik & molekulare Diagnostik



Laborgeräte & Service

Weitere Information auf den folgenden Seiten!
See the following pages for more information!



Lieferung & Zahlungsart

siehe unsere [Liefer- und Versandbedingungen](#)

Zuschläge

- Mindermengenzuschlag
- Trockeneiszuschlag
- Gefahrgutzuschlag
- Expressversand

SZABO-SCANDIC HandelsgmbH

Quellenstraße 110, A-1100 Wien

T. +43(0)1 489 3961-0

F. +43(0)1 489 3961-7

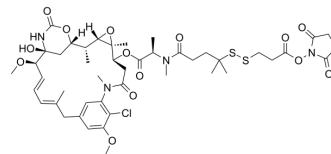
mail@szabo-scandic.com

www.szabo-scandic.com

[linkedin.com/company/szaboscandic](https://www.linkedin.com/company/szaboscandic) 

DM4-SPDP

Cat. No.:	HY-126493
CAS No.:	2245698-48-8
Molecular Formula:	C ₄₅ H ₆₁ ClN ₄ O ₁₄ S ₂
Molecular Weight:	981.57
Target:	Drug-Linker Conjugates for ADC; Microtubule/Tubulin
Pathway:	Antibody-drug Conjugate/ADC Related; Cell Cycle/DNA Damage; Cytoskeleton
Storage:	Please store the product under the recommended conditions in the Certificate of Analysis.



BIOLOGICAL ACTIVITY

Description	DM4-SPDP is a agent-linker conjugate composed of a potent antitubulin agent DM4 and a linker SMCC to make antibody agent conjugate ^[1] . SPDP is a short-chain crosslinker for amine-to-sulfhydryl conjugation via NHS-ester and pyridyldithiol reactive groups that form cleavable (reducible) disulfide bonds with cysteine sulfhydryls ^{[2][3]} .
IC₅₀ & Target	Maytansinoids

REFERENCES

- [1]. Lobedanz S et al. A periplasmic coiled-coil interface underlying TolC recruitment and the assembly of bacterial drug effluxpumps. *Proc Natl Acad Sci U S A*, 2007 Mar 13, 104(11):4612-7.
- [2]. Karumuthil-Melethil S et al. Dendritic cell-directed CTLA-4 engagement during pancreatic beta cell antigen presentation delays type 1 diabetes. *J Immunol* 2010 Jun 15, 184(12):6695-708.
- [3]. Tang R, et al. P-gp activity is a critical resistance factor against AVE9633 and DM4 cytotoxicity in leukaemia cell lines, but not a major mechanism of chemoresistance in cells from acute myeloid leukaemia patients. *BMC Cancer*. 2009 Jun 23;9:199.

Caution: Product has not been fully validated for medical applications. For research use only.

Tel: 609-228-6898

Fax: 609-228-5909

E-mail: tech@MedChemExpress.com

Address: 1 Deer Park Dr, Suite Q, Monmouth Junction, NJ 08852, USA