



SZABO SCANDIC

Part of Europa Biosite

Produktinformation



Forschungsprodukte & Biochemikalien



Zellkultur & Verbrauchsmaterial



Diagnostik & molekulare Diagnostik



Laborgeräte & Service

Weitere Information auf den folgenden Seiten!
See the following pages for more information!



Lieferung & Zahlungsart

siehe unsere [Liefer- und Versandbedingungen](#)

Zuschläge

- Mindermengenzuschlag
- Trockeneiszuschlag
- Gefahrgutzuschlag
- Expressversand

SZABO-SCANDIC HandelsgmbH

Quellenstraße 110, A-1100 Wien

T. +43(0)1 489 3961-0

F. +43(0)1 489 3961-7

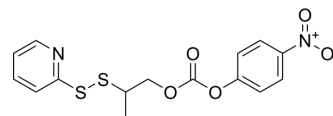
mail@szabo-scandic.com

www.szabo-scandic.com

[linkedin.com/company/szaboscandic](https://www.linkedin.com/company/szaboscandic) 

PPC-NB

Cat. No.:	HY-126530		
CAS No.:	1887040-81-4		
Molecular Formula:	C ₁₅ H ₁₄ N ₂ O ₅ S ₂		
Molecular Weight:	366.41		
Target:	ADC Linker		
Pathway:	Antibody-drug Conjugate/ADC Related		
Storage:	Pure form	-20°C	3 years
		4°C	2 years
	In solvent	-80°C	6 months
		-20°C	1 month



SOLVENT & SOLUBILITY

In Vitro	DMSO : 100 mg/mL (272.92 mM; Need ultrasonic)				
	Solvent Concentration	Mass	1 mg	5 mg	10 mg
Preparing Stock Solutions	1 mM		2.7292 mL	13.6459 mL	27.2918 mL
	5 mM		0.5458 mL	2.7292 mL	5.4584 mL
	10 mM		0.2729 mL	1.3646 mL	2.7292 mL
	Please refer to the solubility information to select the appropriate solvent.				
In Vivo	1. Add each solvent one by one: 10% DMSO >> 40% PEG300 >> 5% Tween-80 >> 45% saline Solubility: ≥ 2.5 mg/mL (6.82 mM); Clear solution 2. Add each solvent one by one: 10% DMSO >> 90% (20% SBE-β-CD in saline) Solubility: ≥ 2.5 mg/mL (6.82 mM); Clear solution				

BIOLOGICAL ACTIVITY

Description	PPC-NB is a glutathione cleavable linker used for the antibody-drug conjugate (ADC) ^[1] .
IC₅₀ & Target	Disulfide Cleavable Linker

REFERENCES

[1]. Robert A. Volkmann, et al. Compounds, compositions, and methods for treatment of diseases involving acidic or hypoxic diseased tissues. WO2019136298A1.

Caution: Product has not been fully validated for medical applications. For research use only.

Tel: 609-228-6898

Fax: 609-228-5909

E-mail: tech@MedChemExpress.com

Address: 1 Deer Park Dr, Suite Q, Monmouth Junction, NJ 08852, USA