



SZABO SCANDIC

Part of Europa Biosite

Produktinformation



Forschungsprodukte & Biochemikalien



Zellkultur & Verbrauchsmaterial



Diagnostik & molekulare Diagnostik



Laborgeräte & Service

Weitere Information auf den folgenden Seiten!
See the following pages for more information!



Lieferung & Zahlungsart

siehe unsere [Liefer- und Versandbedingungen](#)

Zuschläge

- Mindermengenzuschlag
- Trockeneiszuschlag
- Gefahrgutzuschlag
- Expressversand

SZABO-SCANDIC HandelsgmbH

Quellenstraße 110, A-1100 Wien

T. +43(0)1 489 3961-0

F. +43(0)1 489 3961-7

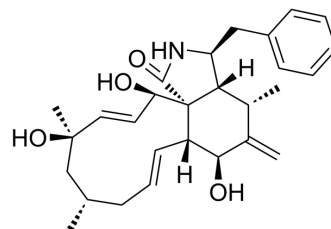
mail@szabo-scandic.com

www.szabo-scandic.com

[linkedin.com/company/szaboscandic](https://www.linkedin.com/company/szaboscandic) 

Cytochalasin J

Cat. No.:	HY-126556
CAS No.:	53760-20-6
Molecular Formula:	C ₂₈ H ₃₇ NO ₄
Molecular Weight:	451.6
Target:	Microtubule/Tubulin
Pathway:	Cell Cycle/DNA Damage; Cytoskeleton
Storage:	Please store the product under the recommended conditions in the Certificate of Analysis.



BIOLOGICAL ACTIVITY

Description

Cytochalasin J is a cytochalasin derivative. Cytochalasin J affects mitotic spindle microtubule organization and kinetochore structure, and exhibits cytotoxicity in human leukemia K562 cell with IC₅₀ of 1.5 μM^{[1][2]}.

REFERENCES

[1]. Xu S, et al., Cytotoxic cytochalasin metabolites of endophytic *Endothia gyrosa*. *Chem Biodivers*. 2009 May;6(5):739-45.

[2]. Wrench GA, et al., Cytochalasin J treatment significantly alters mitotic spindle microtubule organization and kinetochore structure in PtK1 cells. *Cell Motil Cytoskeleton*. 1997;36(2):112-24.

Caution: Product has not been fully validated for medical applications. For research use only.

Tel: 609-228-6898

Fax: 609-228-5909

E-mail: tech@MedChemExpress.com

Address: 1 Deer Park Dr, Suite Q, Monmouth Junction, NJ 08852, USA