



SZABO SCANDIC

Part of Europa Biosite

Produktinformation



Forschungsprodukte & Biochemikalien



Zellkultur & Verbrauchsmaterial



Diagnostik & molekulare Diagnostik



Laborgeräte & Service

Weitere Information auf den folgenden Seiten!
See the following pages for more information!



Lieferung & Zahlungsart

siehe unsere [Liefer- und Versandbedingungen](#)

Zuschläge

- Mindermengenzuschlag
- Trockeneiszuschlag
- Gefahrgutzuschlag
- Expressversand

SZABO-SCANDIC HandelsgmbH

Quellenstraße 110, A-1100 Wien

T. +43(0)1 489 3961-0

F. +43(0)1 489 3961-7

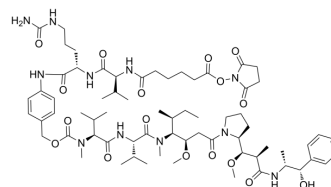
mail@szabo-scandic.com

www.szabo-scandic.com

[linkedin.com/company/szaboscandic](https://www.linkedin.com/company/szaboscandic) 

SC-VC-PAB-MMAE

Cat. No.:	HY-126681
CAS No.:	2259318-46-0
Molecular Formula:	C ₆₈ H ₁₀₅ N ₁₁ O ₁₇
Molecular Weight:	1348.62
Target:	Drug-Linker Conjugates for ADC
Pathway:	Antibody-drug Conjugate/ADC Related
Storage:	-20°C, stored under nitrogen * The compound is unstable in solutions, freshly prepared is recommended.



SOLVENT & SOLUBILITY

In Vitro

DMSO : 100 mg/mL (74.15 mM; Need ultrasonic)

Preparing Stock Solutions	Solvent		1 mg	5 mg	10 mg
	Concentration	Mass			
	1 mM		0.7415 mL	3.7075 mL	7.4150 mL
	5 mM		0.1483 mL	0.7415 mL	1.4830 mL
	10 mM		0.0741 mL	0.3707 mL	0.7415 mL

Please refer to the solubility information to select the appropriate solvent.

BIOLOGICAL ACTIVITY

Description

SC-VC-PAB-MMAE is a agent-linker conjugate for ADC with potent antitumor activity by using the anti-mitotic agent, monomethyl auristatin E (MMAE, a tubulin inhibitor), linked via the cleavable linker SC-VC-PAB^[1].

IC₅₀ & Target

Auristatin

CUSTOMER VALIDATION

- J Pharm Sci. 2023 Dec 7:S0022-3549(23)00511-7.

See more customer validations on www.MedChemExpress.com

REFERENCES

Caution: Product has not been fully validated for medical applications. For research use only.

Tel: 609-228-6898

Fax: 609-228-5909

E-mail: tech@MedChemExpress.com

Address: 1 Deer Park Dr, Suite Q, Monmouth Junction, NJ 08852, USA