



# SZABO SCANDIC

Part of Europa Biosite

## Produktinformation



Forschungsprodukte & Biochemikalien



Zellkultur & Verbrauchsmaterial



Diagnostik & molekulare Diagnostik



Laborgeräte & Service

Weitere Information auf den folgenden Seiten!  
See the following pages for more information!



### Lieferung & Zahlungsart

siehe unsere [Liefer- und Versandbedingungen](#)

### Zuschläge

- Mindermengenzuschlag
- Trockeneiszuschlag
- Gefahrgutzuschlag
- Expressversand

### SZABO-SCANDIC HandelsgmbH

Quellenstraße 110, A-1100 Wien

T. +43(0)1 489 3961-0

F. +43(0)1 489 3961-7

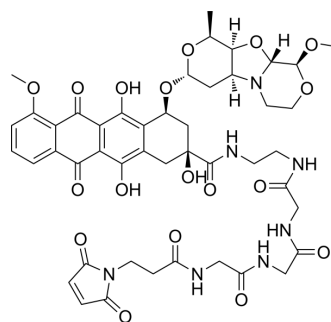
[mail@szabo-scandic.com](mailto:mail@szabo-scandic.com)

[www.szabo-scandic.com](http://www.szabo-scandic.com)

[linkedin.com/company/szaboscandic](https://www.linkedin.com/company/szaboscandic) 

## Mal-C2-Gly3-EDA-PNU-159682

|                           |  |
|---------------------------|--|
| <b>Cat. No.:</b>          | HY-126688  |
| <b>CAS No.:</b>           | 2259318-53-9   |
| <b>Molecular Formula:</b> | C <sub>46</sub> H <sub>53</sub> N <sub>7</sub> O <sub>18</sub>   |
| <b>Molecular Weight:</b>  | 991.95   |
| <b>Target:</b>            | Drug-Linker Conjugates for ADC   |
| <b>Pathway:</b>           | Antibody-drug Conjugate/ADC Related  |
| <b>Storage:</b>           | -20°C, sealed storage, away from moisture and light<br>* In solvent : -80°C, 6 months; -20°C, 1 month (sealed storage, away from moisture and light) |



### SOLVENT & SOLUBILITY

#### In Vitro

DMSO : 100 mg/mL (100.81 mM; Need ultrasonic)

| Concentration | Mass      |           |            |
|---------------|-----------|-----------|------------|
|               | 1 mg      | 5 mg      | 10 mg      |
| 1 mM          | 1.0081 mL | 5.0406 mL | 10.0812 mL |
| 5 mM          | 0.2016 mL | 1.0081 mL | 2.0162 mL  |
| 10 mM         | 0.1008 mL | 0.5041 mL | 1.0081 mL  |

Please refer to the solubility information to select the appropriate solvent.

### BIOLOGICAL ACTIVITY

#### Description

Mal-C2-Gly3-EDA-PNU-159682, a agent-linker conjugate for ADC, consists a cleavable ADC linker Mal-C2-Gly3-EDA and a potent ADC cytotoxin PNU-159682.

#### In Vitro

ADCs are comprised of an antibody to which is attached an ADC cytotoxin through an ADC linker. MCE has not independently confirmed the accuracy of these methods. They are for reference only.

**Caution: Product has not been fully validated for medical applications. For research use only.**

Tel: 609-228-6898

Fax: 609-228-5909

E-mail: tech@MedChemExpress.com

Address: 1 Deer Park Dr, Suite Q, Monmouth Junction, NJ 08852, USA