



# SZABO SCANDIC

Part of Europa Biosite

## Produktinformation



Forschungsprodukte & Biochemikalien



Zellkultur & Verbrauchsmaterial



Diagnostik & molekulare Diagnostik



Laborgeräte & Service

Weitere Information auf den folgenden Seiten!  
See the following pages for more information!



### Lieferung & Zahlungsart

siehe unsere [Liefer- und Versandbedingungen](#)

### Zuschläge

- Mindermengenzuschlag
- Trockeneiszuschlag
- Gefahrgutzuschlag
- Expressversand

### SZABO-SCANDIC HandelsgmbH

Quellenstraße 110, A-1100 Wien

T. +43(0)1 489 3961-0

F. +43(0)1 489 3961-7

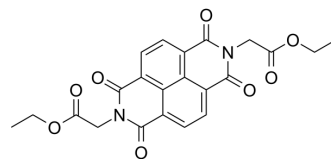
[mail@szabo-scandic.com](mailto:mail@szabo-scandic.com)

[www.szabo-scandic.com](http://www.szabo-scandic.com)

[linkedin.com/company/szaboscandic](https://www.linkedin.com/company/szaboscandic) 

## PPlase-Parvulin inhibitor

<b>Cat. No.:</b>	HY-128034
<b>CAS No.:</b>	64005-90-9
<b>Molecular Formula:</b>	C <sub>22</sub> H <sub>18</sub> N <sub>2</sub> O <sub>8</sub>
<b>Molecular Weight:</b>	438.39
<b>Target:</b>	PIN1
<b>Pathway:</b>	PI3K/Akt/mTOR
<b>Storage:</b>	4°C, protect from light, stored under nitrogen * In solvent : -80°C, 6 months; -20°C, 1 month (protect from light, stored under nitrogen)



### SOLVENT & SOLUBILITY

#### In Vitro

DMSO : ≥ 0.5 mg/mL (1.14 mM)  
\* "≥" means soluble, but saturation unknown.

Concentration	Solvent	Mass		
		1 mg	5 mg	10 mg
Preparing Stock Solutions	1 mM	2.2811 mL	11.4054 mL	22.8107 mL
	5 mM	---	---	---
	10 mM	---	---	---

Please refer to the solubility information to select the appropriate solvent.

### BIOLOGICAL ACTIVITY

#### Description

PPlase-Parvulin inhibitor (compound B) is a cell-permeable inhibitor targeting PPlase Pin1 and Par14, with IC<sub>50</sub>s of 1.5 and 1.0 μM, respectively. PPlase-Parvulin inhibitor has anticancer activity and inhibits the growth and proliferation of mouse embryonic fibroblasts (MEFs)<sup>[1]</sup>.

#### In Vitro

PPlase-Parvulin Inhibitor can inhibit the proliferation of wild-type MEFs (IC<sub>50</sub>: ~1 μM), but its effect on Pin1<sup>-/-</sup> MEFs is not significant<sup>[1]</sup>.

The inhibitory potency (IC<sub>50</sub>s) of PPlase-Parvulin Inhibitor against HCT116 and HSC2 cells was 1.2 μM and 0.7 μM<sup>[1]</sup>, respectively.

PPlase-Parvulin Inhibitor (1 μM; 48 h) can reduce the protein levels of cyclins D1 and B1 in HCT116 cells, but has no significant effect on cyclins E and A<sup>[1]</sup>.

MCE has not independently confirmed the accuracy of these methods. They are for reference only.

Western Blot Analysis<sup>[1]</sup>

Cell Line:	HCT116 cells
------------	--------------

---

Concentration:	1 $\mu$ M
Incubation Time:	24 h, 48 h
Result:	Showed decreased expression of cyclins D1 and B1. In contrast, cyclins E and A were relatively unaffected.

---

## REFERENCES

---

[1]. Uchida T, et al. Pin1 and Par14 peptidyl prolyl isomerase inhibitors block cell proliferation. Chem Biol. 2003 Jan;10(1):15-24.

---

**Caution: Product has not been fully validated for medical applications. For research use only.**

Tel: 609-228-6898

Fax: 609-228-5909

E-mail: [tech@MedChemExpress.com](mailto:tech@MedChemExpress.com)

Address: 1 Deer Park Dr, Suite Q, Monmouth Junction, NJ 08852, USA