



SZABO SCANDIC

Part of Europa Biosite

Produktinformation



Forschungsprodukte & Biochemikalien



Zellkultur & Verbrauchsmaterial



Diagnostik & molekulare Diagnostik



Laborgeräte & Service

Weitere Information auf den folgenden Seiten!
See the following pages for more information!



Lieferung & Zahlungsart

siehe unsere [Liefer- und Versandbedingungen](#)

Zuschläge

- Mindermengenzuschlag
- Trockeneiszuschlag
- Gefahrgutzuschlag
- Expressversand

SZABO-SCANDIC HandelsgmbH

Quellenstraße 110, A-1100 Wien

T. +43(0)1 489 3961-0

F. +43(0)1 489 3961-7

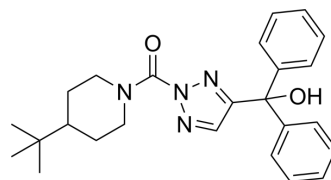
mail@szabo-scandic.com

www.szabo-scandic.com

[linkedin.com/company/szaboscandic](https://www.linkedin.com/company/szaboscandic) 

ML-211

Cat. No.:	HY-128035
CAS No.:	2205032-89-7
Molecular Formula:	C ₂₅ H ₃₀ N ₄ O ₂
Molecular Weight:	418.53
Target:	Phospholipase; MAGL
Pathway:	Metabolic Enzyme/Protease
Storage:	4°C, protect from light * In solvent : -80°C, 6 months; -20°C, 1 month (protect from light)



SOLVENT & SOLUBILITY

In Vitro	DMSO : 100 mg/mL (238.93 mM; Need ultrasonic)					
	Preparing Stock Solutions	Solvent	Mass	1 mg	5 mg	10 mg
		Concentration				
		1 mM		2.3893 mL	11.9466 mL	23.8932 mL
		5 mM		0.4779 mL	2.3893 mL	4.7786 mL
10 mM		0.2389 mL	1.1947 mL	2.3893 mL		
Please refer to the solubility information to select the appropriate solvent.						
In Vivo	<ol style="list-style-type: none"> Add each solvent one by one: 10% DMSO >> 40% PEG300 >> 5% Tween-80 >> 45% saline Solubility: ≥ 2.5 mg/mL (5.97 mM); Clear solution Add each solvent one by one: 10% DMSO >> 90% (20% SBE-β-CD in saline) Solubility: ≥ 2.5 mg/mL (5.97 mM); Clear solution Add each solvent one by one: 10% DMSO >> 90% corn oil Solubility: ≥ 2.5 mg/mL (5.97 mM); Clear solution 					

BIOLOGICAL ACTIVITY

Description	ML-211 is a carbamate-based dual inhibitor of acyl-protein thioesterase 1 (APT1)/lysophospholipase 1 (LYPLA1) (IC ₅₀ =17 nM) and LYPLA2 (IC ₅₀ =30 nM). ML-211 also inhibits thersine hydrolase ABHD11 with an IC ₅₀ value of 10 nM but is ≥ 50-fold selective for LYPLA in a panel of 20 additional serine hydrolases ^[1] .
--------------------	--

REFERENCES

[1]. Adibekian, A., Martin, B.R., Speers, A.E., et al. Optimization and characterization of a triazole urea dual inhibitor for lysophospholipase 1 (LYPLA1) and

Caution: Product has not been fully validated for medical applications. For research use only.

Tel: 609-228-6898

Fax: 609-228-5909

E-mail: tech@MedChemExpress.com

Address: 1 Deer Park Dr, Suite Q, Monmouth Junction, NJ 08852, USA