



SZABO SCANDIC

Part of Europa Biosite

Produktinformation



Forschungsprodukte & Biochemikalien



Zellkultur & Verbrauchsmaterial



Diagnostik & molekulare Diagnostik



Laborgeräte & Service

Weitere Information auf den folgenden Seiten!
See the following pages for more information!



Lieferung & Zahlungsart

siehe unsere [Liefer- und Versandbedingungen](#)

Zuschläge

- Mindermengenzuschlag
- Trockeneiszuschlag
- Gefahrgutzuschlag
- Expressversand

SZABO-SCANDIC HandelsgmbH

Quellenstraße 110, A-1100 Wien

T. +43(0)1 489 3961-0

F. +43(0)1 489 3961-7

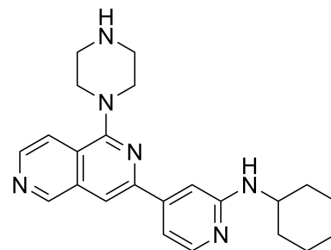
mail@szabo-scandic.com

www.szabo-scandic.com

[linkedin.com/company/szaboscandic](https://www.linkedin.com/company/szaboscandic) 

PKC/PKD-IN-1

Cat. No.:	HY-128142
CAS No.:	1071135-06-2
Molecular Formula:	C ₂₃ H ₂₈ N ₆
Molecular Weight:	388.51
Target:	PKD; PKC
Pathway:	Apoptosis; Epigenetics; TGF-beta/Smad
Storage:	Please store the product under the recommended conditions in the Certificate of Analysis.



BIOLOGICAL ACTIVITY

Description	PKC/PKD-IN-1 (Compound 13C) is an orally active dual protein kinase C/D (PKC/PKD) inhibitor with an IC ₅₀ value of 0.6 nM for PKD1. PKC/PKD-IN-1 can attenuate high-salt diet-induced cardiac hypertrophy and can be used in the study of heart failure ^[1] .
IC₅₀ & Target	PKD1 0.6 nM (IC ₅₀)
In Vivo	PKC/PKD-IN-1 (Compound 13C) (5-50 mg/kg; p.o.; once daily for 14 days), in Dahl salt-sensitive (DSS) rats, can attenuate high-salt diet-induced cardiac hypertrophy at a dose of 50 mg/kg ^[1] . MCE has not independently confirmed the accuracy of these methods. They are for reference only.

REFERENCES

[1]. Meredith EL, et al. Identification of orally available naphthyridine protein kinase D inhibitors. *J Med Chem.* 2010;53(15):5400-5421.

Caution: Product has not been fully validated for medical applications. For research use only.

Tel: 609-228-6898

Fax: 609-228-5909

E-mail: tech@MedChemExpress.com

Address: 1 Deer Park Dr, Suite Q, Monmouth Junction, NJ 08852, USA