



# SZABO SCANDIC

Part of Europa Biosite

## Produktinformation



Forschungsprodukte & Biochemikalien



Zellkultur & Verbrauchsmaterial



Diagnostik & molekulare Diagnostik



Laborgeräte & Service

Weitere Information auf den folgenden Seiten!  
See the following pages for more information!



### Lieferung & Zahlungsart

siehe unsere [Liefer- und Versandbedingungen](#)

### Zuschläge

- Mindermengenzuschlag
- Trockeneiszuschlag
- Gefahrgutzuschlag
- Expressversand

### SZABO-SCANDIC HandelsgmbH

Quellenstraße 110, A-1100 Wien

T. +43(0)1 489 3961-0

F. +43(0)1 489 3961-7

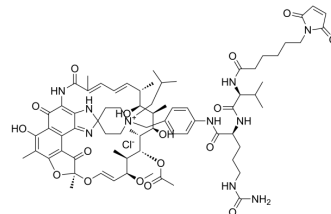
[mail@szabo-scandic.com](mailto:mail@szabo-scandic.com)

[www.szabo-scandic.com](http://www.szabo-scandic.com)

[linkedin.com/company/szaboscandic](https://www.linkedin.com/company/szaboscandic) 

## MC-Val-Cit-PAB-rifabutin

<b>Cat. No.:</b>	HY-128909
<b>CAS No.:</b>	2055900-34-8
<b>Molecular Formula:</b>	C <sub>74</sub> H <sub>101</sub> ClN <sub>10</sub> O <sub>17</sub>
<b>Molecular Weight:</b>	1438.1
<b>Target:</b>	Drug-Linker Conjugates for ADC
<b>Pathway:</b>	Antibody-drug Conjugate/ADC Related
<b>Storage:</b>	4°C, sealed storage, away from moisture * In solvent : -80°C, 6 months; -20°C, 1 month (sealed storage, away from moisture)



### SOLVENT & SOLUBILITY

#### In Vitro

DMSO : 20 mg/mL (13.91 mM; Need ultrasonic)

Preparing Stock Solutions	Solvent		Mass		
	Concentration		1 mg	5 mg	10 mg
	1 mM		0.6954 mL	3.4768 mL	6.9536 mL
	5 mM		0.1391 mL	0.6954 mL	1.3907 mL
	10 mM		0.0695 mL	0.3477 mL	0.6954 mL

Please refer to the solubility information to select the appropriate solvent.

### BIOLOGICAL ACTIVITY

#### Description

MC-Val-Cit-PAB-rifabutin is a agent-linker conjugate for ADC with potent antitumor activity by using rifabutin (an DNA-dependent RNA polymerase inhibitor), linked via the ADC linker MC-Val-Cit-PAB.

#### IC<sub>50</sub> & Target

Traditional Cytotoxic Agents

### REFERENCES

[1]. Staben LR, et al. Targeted drug delivery through the traceless release of tertiary and heteroaryl amines from antibody-drug conjugates. Nat Chem. 2016 Dec;8(12):1112-1119.

---

**Caution: Product has not been fully validated for medical applications. For research use only.**

Tel: 609-228-6898

Fax: 609-228-5909

E-mail: [tech@MedChemExpress.com](mailto:tech@MedChemExpress.com)

Address: 1 Deer Park Dr, Suite Q, Monmouth Junction, NJ 08852, USA