



SZABO SCANDIC

Part of Europa Biosite

Produktinformation



Forschungsprodukte & Biochemikalien



Zellkultur & Verbrauchsmaterial



Diagnostik & molekulare Diagnostik



Laborgeräte & Service

Weitere Information auf den folgenden Seiten!
See the following pages for more information!



Lieferung & Zahlungsart

siehe unsere [Liefer- und Versandbedingungen](#)

Zuschläge

- Mindermengenzuschlag
- Trockeneiszuschlag
- Gefahrgutzuschlag
- Expressversand

SZABO-SCANDIC HandelsgmbH

Quellenstraße 110, A-1100 Wien

T. +43(0)1 489 3961-0

F. +43(0)1 489 3961-7

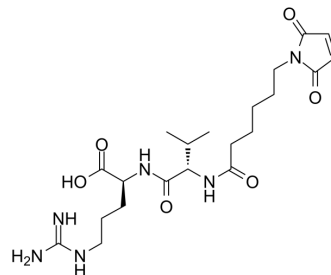
mail@szabo-scandic.com

www.szabo-scandic.com

[linkedin.com/company/szaboscandic](https://www.linkedin.com/company/szaboscandic) 

Mc-Leu-Gly-Arg

| | |
|--------------------|---|
| Cat. No.: | HY-128927 |
| CAS No.: | 2639874-49-8 |
| Molecular Formula: | C ₂₁ H ₃₄ N ₆ O ₆ |
| Molecular Weight: | 466.53 |
| Target: | ADC Linker |
| Pathway: | Antibody-drug Conjugate/ADC Related |
| Storage: | Please store the product under the recommended conditions in the Certificate of Analysis. |



BIOLOGICAL ACTIVITY

| | |
|---------------------------|---|
| Description | Mc-Leu-Gly-Arg is a cleavable ether linker for antibody-drug conjugates (ADC) design. |
| IC ₅₀ & Target | Cleavable Linker |

REFERENCES

[1]. Zhang D, et al. Immobilization of p-Aminobenzyl Ether Linker and Payload Potency and Stability Determine the Cell-Killing Activity of Antibody-Drug Conjugates with Phenol-Containing Payloads. *Bioconjug Chem.* 2018 Feb 21;29(2):267-274.

Caution: Product has not been fully validated for medical applications. For research use only.

Tel: 609-228-6898

Fax: 609-228-5909

E-mail: tech@MedChemExpress.com

Address: 1 Deer Park Dr, Suite Q, Monmouth Junction, NJ 08852, USA