



SZABO SCANDIC

Part of Europa Biosite

Produktinformation



Forschungsprodukte & Biochemikalien



Zellkultur & Verbrauchsmaterial



Diagnostik & molekulare Diagnostik



Laborgeräte & Service

Weitere Information auf den folgenden Seiten!
See the following pages for more information!



Lieferung & Zahlungsart

siehe unsere [Liefer- und Versandbedingungen](#)

Zuschläge

- Mindermengenzuschlag
- Trockeneiszuschlag
- Gefahrgutzuschlag
- Expressversand

SZABO-SCANDIC HandelsgmbH

Quellenstraße 110, A-1100 Wien

T. +43(0)1 489 3961-0

F. +43(0)1 489 3961-7

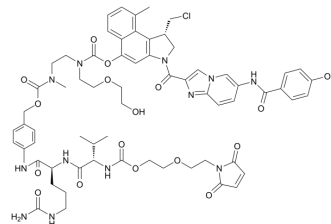
mail@szabo-scandic.com

www.szabo-scandic.com

[linkedin.com/company/szaboscandic](https://www.linkedin.com/company/szaboscandic) 

Vc-seco-DUBA

Cat. No.:	HY-128957
CAS No.:	1345681-58-4
Molecular Formula:	C ₆₅ H ₇₅ ClN ₁₂ O ₁₇
Molecular Weight:	1331.81
Target:	Drug-Linker Conjugates for ADC
Pathway:	Antibody-drug Conjugate/ADC Related
Storage:	-80°C, protect from light, stored under nitrogen



SOLVENT & SOLUBILITY

In Vitro	DMSO : 100 mg/mL (75.09 mM; Need ultrasonic)						
	Preparing Stock Solutions	Solvent Concentration	Mass	1 mg	5 mg	10 mg	
				1 mM	0.7509 mL	3.7543 mL	7.5086 mL
				5 mM	0.1502 mL	0.7509 mL	1.5017 mL
				10 mM	0.0751 mL	0.3754 mL	0.7509 mL
Please refer to the solubility information to select the appropriate solvent.							
In Vivo	1. Add each solvent one by one: 10% DMSO >> 40% PEG300 >> 5% Tween-80 >> 45% saline Solubility: ≥ 2.44 mg/mL (1.83 mM); Clear solution						
	2. Add each solvent one by one: 10% DMSO >> 90% (20% SBE-β-CD in saline) Solubility: 2.44 mg/mL (1.83 mM); Suspended solution; Need ultrasonic						
	3. Add each solvent one by one: 10% DMSO >> 90% corn oil Solubility: ≥ 2.44 mg/mL (1.83 mM); Clear solution						

BIOLOGICAL ACTIVITY

Description	Vc-seco-DUBA (SYD985) is a agent-linker conjugate for ADC with potent antitumor activity by using DUBA (DNA alkylating agent), linked via the ADC linker Vc-seco ^[1] .
IC ₅₀ & Target	Duocarmycins

REFERENCES

Caution: Product has not been fully validated for medical applications. For research use only.

Tel: 609-228-6898

Fax: 609-228-5909

E-mail: tech@MedChemExpress.com

Address: 1 Deer Park Dr, Suite Q, Monmouth Junction, NJ 08852, USA