



# SZABO SCANDIC

Part of Europa Biosite

## Produktinformation



Forschungsprodukte & Biochemikalien



Zellkultur & Verbrauchsmaterial



Diagnostik & molekulare Diagnostik



Laborgeräte & Service

Weitere Information auf den folgenden Seiten!  
See the following pages for more information!



### Lieferung & Zahlungsart

siehe unsere [Liefer- und Versandbedingungen](#)

### Zuschläge

- Mindermengenzuschlag
- Trockeneiszuschlag
- Gefahrgutzuschlag
- Expressversand

### SZABO-SCANDIC HandelsgmbH

Quellenstraße 110, A-1100 Wien

T. +43(0)1 489 3961-0

F. +43(0)1 489 3961-7

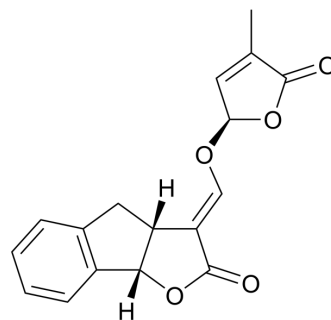
[mail@szabo-scandic.com](mailto:mail@szabo-scandic.com)

[www.szabo-scandic.com](http://www.szabo-scandic.com)

[linkedin.com/company/szaboscandic](https://www.linkedin.com/company/szaboscandic) 

## (Rac)-GR24

<b>Cat. No.:</b>	HY-129038
<b>CAS No.:</b>	76974-79-3
<b>Molecular Formula:</b>	C <sub>17</sub> H <sub>14</sub> O <sub>5</sub>
<b>Molecular Weight:</b>	298.29
<b>Target:</b>	Biochemical Assay Reagents
<b>Pathway:</b>	Others
<b>Storage:</b>	-20°C, sealed storage, away from moisture and light * In solvent : -80°C, 6 months; -20°C, 1 month (sealed storage, away from moisture and light)



### SOLVENT & SOLUBILITY

<b>In Vitro</b>	DMSO : 100 mg/mL (335.24 mM; Need ultrasonic)				
		Solvent Concentration	Mass 1 mg	5 mg	10 mg
	<b>Preparing Stock Solutions</b>	1 mM	3.3524 mL	16.7622 mL	33.5244 mL
		5 mM	0.6705 mL	3.3524 mL	6.7049 mL
		10 mM	0.3352 mL	1.6762 mL	3.3524 mL
Please refer to the solubility information to select the appropriate solvent.					
<b>In Vivo</b>	1. Add each solvent one by one: 10% DMSO >> 90% corn oil Solubility: ≥ 2.5 mg/mL (8.38 mM); Clear solution				

### BIOLOGICAL ACTIVITY

<b>Description</b>	(Rac)-GR24 is a biochemical reagent that can be used as a biological material or organic compound for life science related research.
--------------------	--

**Caution: Product has not been fully validated for medical applications. For research use only.**

Tel: 609-228-6898

Fax: 609-228-5909

E-mail: tech@MedChemExpress.com

Address: 1 Deer Park Dr, Suite Q, Monmouth Junction, NJ 08852, USA