



# SZABO SCANDIC

Part of Europa Biosite

## Produktinformation



Forschungsprodukte & Biochemikalien



Zellkultur & Verbrauchsmaterial



Diagnostik & molekulare Diagnostik



Laborgeräte & Service

Weitere Information auf den folgenden Seiten!  
See the following pages for more information!



### Lieferung & Zahlungsart

siehe unsere [Liefer- und Versandbedingungen](#)

### Zuschläge

- Mindermengenzuschlag
- Trockeneiszuschlag
- Gefahrgutzuschlag
- Expressversand

### SZABO-SCANDIC HandelsgmbH

Quellenstraße 110, A-1100 Wien

T. +43(0)1 489 3961-0

F. +43(0)1 489 3961-7

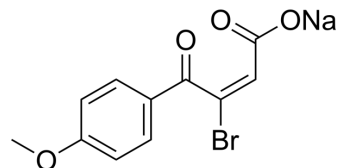
[mail@szabo-scandic.com](mailto:mail@szabo-scandic.com)

[www.szabo-scandic.com](http://www.szabo-scandic.com)

[linkedin.com/company/szaboscandic](https://www.linkedin.com/company/szaboscandic) 

## Cytembena

<b>Cat. No.:</b>	HY-129246
<b>CAS No.:</b>	21739-91-3
<b>Molecular Formula:</b>	C <sub>11</sub> H <sub>8</sub> BrNaO <sub>4</sub>
<b>Molecular Weight:</b>	307.07
<b>Target:</b>	DNA/RNA Synthesis
<b>Pathway:</b>	Cell Cycle/DNA Damage
<b>Storage:</b>	Please store the product under the recommended conditions in the Certificate of Analysis.



### SOLVENT & SOLUBILITY

#### In Vitro

DMSO : 50 mg/mL (162.83 mM; Need ultrasonic)

Concentration	Solvent	Mass	1 mg	5 mg	10 mg
			Preparing Stock Solutions	1 mM	5 mM
1 mM			3.2566 mL	16.2829 mL	32.5659 mL
5 mM			0.6513 mL	3.2566 mL	6.5132 mL
10 mM			0.3257 mL	1.6283 mL	3.2566 mL

Please refer to the solubility information to select the appropriate solvent.

### BIOLOGICAL ACTIVITY

#### Description

Cytembena is inhibitor for replicative DNA synthesis, purine synthesis and tetrahydrofolate formylase activity. Cytembena ameliorates ovarian or breast cancer, relieves the pain from skeletal metastases<sup>[1][2]</sup>.

### REFERENCES

[1]. Falkson HC, et al., Phase II trial of cytembena in patients with advanced ovarian and breast cancer. *Cancer Treat Rep.* 1976 Nov;60(11):1655-8.

[2]. Berger NA, et al., Description of a permeable eukaryotic cell system to study agents affecting DNA synthesis: demonstration that cytembena is a direct inhibitor of replicative DNA synthesis. *J Natl Cancer Inst.* 1977 Apr;58(4):1167-9.

**Caution: Product has not been fully validated for medical applications. For research use only.**

Tel: 609-228-6898

Fax: 609-228-5909

E-mail: tech@MedChemExpress.com

Address: 1 Deer Park Dr, Suite Q, Monmouth Junction, NJ 08852, USA