



# SZABO SCANDIC

Part of Europa Biosite

## Produktinformation



Forschungsprodukte & Biochemikalien



Zellkultur & Verbrauchsmaterial



Diagnostik & molekulare Diagnostik



Laborgeräte & Service

Weitere Information auf den folgenden Seiten!  
See the following pages for more information!



### Lieferung & Zahlungsart

siehe unsere [Liefer- und Versandbedingungen](#)

### Zuschläge

- Mindermengenzuschlag
- Trockeneiszuschlag
- Gefahrgutzuschlag
- Expressversand

### SZABO-SCANDIC HandelsgmbH

Quellenstraße 110, A-1100 Wien

T. +43(0)1 489 3961-0

F. +43(0)1 489 3961-7

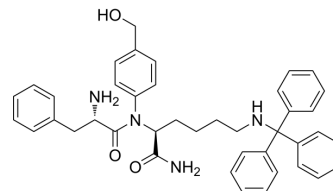
[mail@szabo-scandic.com](mailto:mail@szabo-scandic.com)

[www.szabo-scandic.com](http://www.szabo-scandic.com)

[linkedin.com/company/szaboscandic](https://www.linkedin.com/company/szaboscandic) 

## Phe-Lys(Trt)-PAB

Cat. No.:	HY-129349
CAS No.:	1116085-99-4
Molecular Formula:	C <sub>41</sub> H <sub>44</sub> N <sub>4</sub> O <sub>3</sub>
Molecular Weight:	640.81
Target:	ADC Linker
Pathway:	Antibody-drug Conjugate/ADC Related
Storage:	Please store the product under the recommended conditions in the Certificate of Analysis.



### BIOLOGICAL ACTIVITY

Description	Phe-Lys(Trt)-PAB is a cathepsin cleavable ADC linker used for the antibody-drug conjugates (ADCs) <sup>[1]</sup> .	
IC <sub>50</sub> & Target	Protease Cleavable	Cleavable

### REFERENCES

[1]. Abu Ajaj K, et al. Development of protein-binding bifunctional linkers for a new generation of dual-acting prodrugs. *Bioconjug Chem.* 2009 Feb;20(2):390-6.

**Caution: Product has not been fully validated for medical applications. For research use only.**

Tel: 609-228-6898

Fax: 609-228-5909

E-mail: tech@MedChemExpress.com

Address: 1 Deer Park Dr, Suite Q, Monmouth Junction, NJ 08852, USA