



SZABO SCANDIC

Part of Europa Biosite

Produktinformation



Forschungsprodukte & Biochemikalien



Zellkultur & Verbrauchsmaterial



Diagnostik & molekulare Diagnostik



Laborgeräte & Service

Weitere Information auf den folgenden Seiten!
See the following pages for more information!



Lieferung & Zahlungsart

siehe unsere [Liefer- und Versandbedingungen](#)

Zuschläge

- Mindermengenzuschlag
- Trockeneiszuschlag
- Gefahrgutzuschlag
- Expressversand

SZABO-SCANDIC HandelsgmbH

Quellenstraße 110, A-1100 Wien

T. +43(0)1 489 3961-0

F. +43(0)1 489 3961-7

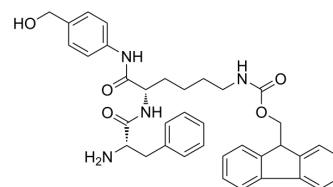
mail@szabo-scandic.com

www.szabo-scandic.com

[linkedin.com/company/szaboscandic](https://www.linkedin.com/company/szaboscandic) 

Phe-Lys(Fmoc)-PAB

Cat. No.:	HY-129362	
CAS No.:	2149584-03-0	
Molecular Formula:	C ₃₇ H ₄₀ N ₄ O ₅	
Molecular Weight:	620.74	
Target:	ADC Linker	
Pathway:	Antibody-drug Conjugate/ADC Related	
Storage:	Powder	-20°C 3 years
	In solvent	-80°C 6 months
		-20°C 1 month



SOLVENT & SOLUBILITY

In Vitro	DMSO : 100 mg/mL (161.10 mM; Need ultrasonic)				
		Solvent	Mass		
	Preparing Stock Solutions	Concentration	1 mg	5 mg	10 mg
		1 mM	1.6110 mL	8.0549 mL	16.1098 mL
		5 mM	0.3222 mL	1.6110 mL	3.2220 mL
10 mM		0.1611 mL	0.8055 mL	1.6110 mL	
Please refer to the solubility information to select the appropriate solvent.					
In Vivo	<ol style="list-style-type: none"> Add each solvent one by one: 10% DMSO >> 40% PEG300 >> 5% Tween-80 >> 45% saline Solubility: ≥ 2.5 mg/mL (4.03 mM); Clear solution Add each solvent one by one: 10% DMSO >> 90% (20% SBE-β-CD in saline) Solubility: ≥ 2.5 mg/mL (4.03 mM); Clear solution Add each solvent one by one: 10% DMSO >> 90% corn oil Solubility: ≥ 2.5 mg/mL (4.03 mM); Clear solution 				

BIOLOGICAL ACTIVITY

Description	Phe-Lys(Fmoc)-PAB is a cathepsin cleavable ADC linker used for the antibody-drug conjugates (ADCs) ^[1] .	
IC₅₀ & Target	Cleavable	Protease Cleavable

REFERENCES

Caution: Product has not been fully validated for medical applications. For research use only.

Tel: 609-228-6898

Fax: 609-228-5909

E-mail: tech@MedChemExpress.com

Address: 1 Deer Park Dr, Suite Q, Monmouth Junction, NJ 08852, USA