



# SZABO SCANDIC

Part of Europa Biosite

## Produktinformation



Forschungsprodukte & Biochemikalien



Zellkultur & Verbrauchsmaterial



Diagnostik & molekulare Diagnostik



Laborgeräte & Service

Weitere Information auf den folgenden Seiten!  
See the following pages for more information!



### Lieferung & Zahlungsart

siehe unsere [Liefer- und Versandbedingungen](#)

### Zuschläge

- Mindermengenzuschlag
- Trockeneiszuschlag
- Gefahrgutzuschlag
- Expressversand

### SZABO-SCANDIC HandelsgmbH

Quellenstraße 110, A-1100 Wien

T. +43(0)1 489 3961-0

F. +43(0)1 489 3961-7

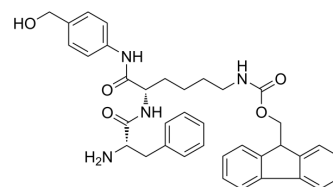
[mail@szabo-scandic.com](mailto:mail@szabo-scandic.com)

[www.szabo-scandic.com](http://www.szabo-scandic.com)

[linkedin.com/company/szaboscandic](https://www.linkedin.com/company/szaboscandic) 

## Phe-Lys(Fmoc)-PAB

|                    |   |       |          |
|--------------------|---|-------|----------|
| Cat. No.:          | HY-129362   |       |          |
| CAS No.:           | 2149584-03-0  |       |          |
| Molecular Formula: | C <sub>37</sub> H <sub>40</sub> N <sub>4</sub> O <sub>5</sub> |       |          |
| Molecular Weight:  | 620.74  |       |          |
| Target:            | ADC Linker  |       |          |
| Pathway:           | Antibody-drug Conjugate/ADC Related                           |       |          |
| Storage:           | Powder  | -20°C | 3 years  |
|                    | In solvent  | -80°C | 6 months |
|                    |   | -20°C | 1 month  |



### SOLVENT & SOLUBILITY

| In Vitro  | DMSO : 100 mg/mL (161.10 mM; Need ultrasonic)  |  |           |           |           |            |       |               |  |  |  |  |      |  |           |           |            |      |  |           |           |           |       |  |           |           |           |  |  |  |
|---|--|--|-----------|-----------|-----------|------------|-------|---------------|--|--|--|--|------|--|-----------|-----------|------------|------|--|-----------|-----------|-----------|-------|--|-----------|-----------|-----------|--|--|--|
|   | Preparing Stock Solutions  | <table border="1"> <thead> <tr> <th>Solvent</th> <th>Mass</th> <th>1 mg</th> <th>5 mg</th> <th>10 mg</th> </tr> </thead> <tbody> <tr> <td>Concentration</td> <td></td> <td></td> <td></td> <td></td> </tr> <tr> <td>1 mM</td> <td></td> <td>1.6110 mL</td> <td>8.0549 mL</td> <td>16.1098 mL</td> </tr> <tr> <td>5 mM</td> <td></td> <td>0.3222 mL</td> <td>1.6110 mL</td> <td>3.2220 mL</td> </tr> <tr> <td>10 mM</td> <td></td> <td>0.1611 mL</td> <td>0.8055 mL</td> <td>1.6110 mL</td> </tr> </tbody> </table> | Solvent   | Mass      | 1 mg      | 5 mg       | 10 mg | Concentration |  |  |  |  | 1 mM |  | 1.6110 mL | 8.0549 mL | 16.1098 mL | 5 mM |  | 0.3222 mL | 1.6110 mL | 3.2220 mL | 10 mM |  | 0.1611 mL | 0.8055 mL | 1.6110 mL |  |  |  |
|   |  | Solvent  | Mass      | 1 mg      | 5 mg      | 10 mg      |       |               |  |  |  |  |      |  |           |           |            |      |  |           |           |           |       |  |           |           |           |  |  |  |
|   |  | Concentration  |           |           |           |            |       |               |  |  |  |  |      |  |           |           |            |      |  |           |           |           |       |  |           |           |           |  |  |  |
|   |  | 1 mM   |           | 1.6110 mL | 8.0549 mL | 16.1098 mL |       |               |  |  |  |  |      |  |           |           |            |      |  |           |           |           |       |  |           |           |           |  |  |  |
| 5 mM  |  | 0.3222 mL  | 1.6110 mL | 3.2220 mL |           |            |       |               |  |  |  |  |      |  |           |           |            |      |  |           |           |           |       |  |           |           |           |  |  |  |
| 10 mM   |  | 0.1611 mL  | 0.8055 mL | 1.6110 mL |           |            |       |               |  |  |  |  |      |  |           |           |            |      |  |           |           |           |       |  |           |           |           |  |  |  |
| Please refer to the solubility information to select the appropriate solvent. |  |  |           |           |           |            |       |               |  |  |  |  |      |  |           |           |            |      |  |           |           |           |       |  |           |           |           |  |  |  |
| In Vivo   | 1. Add each solvent one by one: 10% DMSO >> 40% PEG300 >> 5% Tween-80 >> 45% saline<br>Solubility: ≥ 2.5 mg/mL (4.03 mM); Clear solution |  |           |           |           |            |       |               |  |  |  |  |      |  |           |           |            |      |  |           |           |           |       |  |           |           |           |  |  |  |
|   | 2. Add each solvent one by one: 10% DMSO >> 90% (20% SBE-β-CD in saline)<br>Solubility: ≥ 2.5 mg/mL (4.03 mM); Clear solution            |  |           |           |           |            |       |               |  |  |  |  |      |  |           |           |            |      |  |           |           |           |       |  |           |           |           |  |  |  |
|   | 3. Add each solvent one by one: 10% DMSO >> 90% corn oil<br>Solubility: ≥ 2.5 mg/mL (4.03 mM); Clear solution                            |  |           |           |           |            |       |               |  |  |  |  |      |  |           |           |            |      |  |           |           |           |       |  |           |           |           |  |  |  |

### BIOLOGICAL ACTIVITY

|                           |   |                    |
|---------------------------|---|--------------------|
| Description               | Phe-Lys(Fmoc)-PAB is a cathepsin cleavable ADC linker used for the antibody-drug conjugates (ADCs) <sup>[1]</sup> . |                    |
| IC <sub>50</sub> & Target | Cleavable   | Protease Cleavable |

### REFERENCES

**Caution: Product has not been fully validated for medical applications. For research use only.**

Tel: 609-228-6898

Fax: 609-228-5909

E-mail: [tech@MedChemExpress.com](mailto:tech@MedChemExpress.com)

Address: 1 Deer Park Dr, Suite Q, Monmouth Junction, NJ 08852, USA