



SZABO SCANDIC

Part of Europa Biosite

Produktinformation



Forschungsprodukte & Biochemikalien



Zellkultur & Verbrauchsmaterial



Diagnostik & molekulare Diagnostik



Laborgeräte & Service

Weitere Information auf den folgenden Seiten!
See the following pages for more information!



Lieferung & Zahlungsart

siehe unsere [Liefer- und Versandbedingungen](#)

Zuschläge

- Mindermengenzuschlag
- Trockeneiszuschlag
- Gefahrgutzuschlag
- Expressversand

SZABO-SCANDIC HandelsgmbH

Quellenstraße 110, A-1100 Wien

T. +43(0)1 489 3961-0

F. +43(0)1 489 3961-7

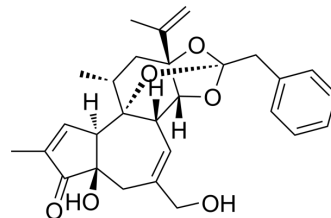
mail@szabo-scandic.com

www.szabo-scandic.com

[linkedin.com/company/szaboscandic](https://www.linkedin.com/company/szaboscandic) 

ROPA

Cat. No.:	HY-129483
CAS No.:	57852-42-3
Molecular Formula:	C ₂₈ H ₃₂ O ₆
Molecular Weight:	464.55
Target:	PKC
Pathway:	Epigenetics; TGF-beta/Smad
Storage:	Please store the product under the recommended conditions in the Certificate of Analysis.



BIOLOGICAL ACTIVITY

Description	ROPA is a potent PKC activator. ROPA has anti-proliferative activity ^[1] .								
In Vitro	<p>ROPA (7.5 μM, 2-24 h) can induce IEC-18 cell cycle G1- > S arrest^[1]. MCE has not independently confirmed the accuracy of these methods. They are for reference only. Western Blot Analysis^[1]</p> <table border="1"> <tr> <td>Cell Line:</td> <td>IEC-18</td> </tr> <tr> <td>Concentration:</td> <td>7.5 μM</td> </tr> <tr> <td>Incubation Time:</td> <td>2-24 h</td> </tr> <tr> <td>Result:</td> <td>Downregulated the expression of cyclin D1 and p21^{Waf1/Cip1}.</td> </tr> </table>	Cell Line:	IEC-18	Concentration:	7.5 μM	Incubation Time:	2-24 h	Result:	Downregulated the expression of cyclin D1 and p21 ^{Waf1/Cip1} .
Cell Line:	IEC-18								
Concentration:	7.5 μM								
Incubation Time:	2-24 h								
Result:	Downregulated the expression of cyclin D1 and p21 ^{Waf1/Cip1} .								

REFERENCES

[1]. Frey MR, et al. Cell cycle- and protein kinase C-specific effects of resiniferatoxin and resiniferonol 9,13,14-ortho-phenylacetate in intestinal epithelial cells. *Biochem Pharmacol.* 2004 May 15;67(10):1873-86.

Caution: Product has not been fully validated for medical applications. For research use only.

Tel: 609-228-6898

Fax: 609-228-5909

E-mail: tech@MedChemExpress.com

Address: 1 Deer Park Dr, Suite Q, Monmouth Junction, NJ 08852, USA