



SZABO SCANDIC

Part of Europa Biosite

Produktinformation



Forschungsprodukte & Biochemikalien



Zellkultur & Verbrauchsmaterial



Diagnostik & molekulare Diagnostik



Laborgeräte & Service

Weitere Information auf den folgenden Seiten!
See the following pages for more information!



Lieferung & Zahlungsart

siehe unsere [Liefer- und Versandbedingungen](#)

Zuschläge

- Mindermengenzuschlag
- Trockeneiszuschlag
- Gefahrgutzuschlag
- Expressversand

SZABO-SCANDIC HandelsgmbH

Quellenstraße 110, A-1100 Wien

T. +43(0)1 489 3961-0

F. +43(0)1 489 3961-7

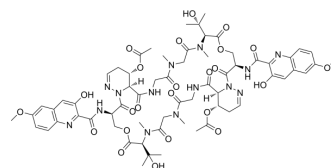
mail@szabo-scandic.com

www.szabo-scandic.com

[linkedin.com/company/szaboscandic](https://www.linkedin.com/company/szaboscandic) 

Luzopeptin A

Cat. No.:	HY-130050
CAS No.:	75580-37-9
Molecular Formula:	C ₆₄ H ₇₈ N ₁₄ O ₂₄
Molecular Weight:	1427.38
Target:	Antibiotic; HIV
Pathway:	Anti-infection
Storage:	Please store the product under the recommended conditions in the Certificate of Analysis.



BIOLOGICAL ACTIVITY

Description	Luzopeptin A (BBM-928 A) is an actinoleukin-like antitumor antibiotic. Luzopeptin A is a bifunctional DNA intercalator which can interact with isolated DNA molecules. Luzopeptin A induces an unwinding-rewinding process of the closed superhelical PM2 DNA. Luzopeptin A is active against HIV-1 and HIV-2 reverse transcriptase with IC ₅₀ s of 7 nM and 68 nM for HIV-1 RT and HIV-2 RT, respectively ^{[1][2]} .	
IC₅₀ & Target	HIV-1 RT 7 nM (IC ₅₀)	HIV-2 RT 68 nM (IC ₅₀)

REFERENCES

[1]. Konishi M, Ohkuma H, Sakai F, et al. Structures of BBM-928 A, B, and C. Novel antitumor antibiotics from *Actinomadura luzonensis*[J]. Journal of the American Chemical Society, 1981, 103(5): 1241-1243.

Caution: Product has not been fully validated for medical applications. For research use only.

Tel: 609-228-6898

Fax: 609-228-5909

E-mail: tech@MedChemExpress.com

Address: 1 Deer Park Dr, Suite Q, Monmouth Junction, NJ 08852, USA