



# SZABO SCANDIC

Part of Europa Biosite

## Produktinformation



Forschungsprodukte & Biochemikalien



Zellkultur & Verbrauchsmaterial



Diagnostik & molekulare Diagnostik



Laborgeräte & Service

Weitere Information auf den folgenden Seiten!  
See the following pages for more information!



### Lieferung & Zahlungsart

siehe unsere [Liefer- und Versandbedingungen](#)

### Zuschläge

- Mindermengenzuschlag
- Trockeneiszuschlag
- Gefahrgutzuschlag
- Expressversand

### SZABO-SCANDIC HandelsgmbH

Quellenstraße 110, A-1100 Wien

T. +43(0)1 489 3961-0

F. +43(0)1 489 3961-7

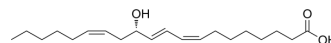
[mail@szabo-scandic.com](mailto:mail@szabo-scandic.com)

[www.szabo-scandic.com](http://www.szabo-scandic.com)

[linkedin.com/company/szaboscandic](https://www.linkedin.com/company/szaboscandic) 

## 12(S)-HETrE

Cat. No.:	HY-130060
CAS No.:	72710-10-2
Molecular Formula:	C <sub>20</sub> H <sub>34</sub> O <sub>3</sub>
Molecular Weight:	322.48
Target:	Others
Pathway:	Others
Storage:	Please store the product under the recommended conditions in the Certificate of Analysis.



### BIOLOGICAL ACTIVITY

Description	12(S)-HETrE is a fatty acid metabolite that inhibits platelet aggregation. 12(S)-HETrE can be used in thrombosis-related research <sup>[1]</sup> .
IC <sub>50</sub> & Target	Platelet Aggregation <sup>[1]</sup>
In Vitro	12(S)-HPETrE (200 μM) in the presence or absence of aspirin significantly inhibited thrombin-induced clot retraction <sup>[1]</sup> . 12(S)-HETrE inhibits platelet aggregation with an IC <sub>50</sub> value of 5 μM <sup>[1]</sup> . MCE has not independently confirmed the accuracy of these methods. They are for reference only.

### REFERENCES

[1]. Ikei KN, et al. Investigations of human platelet-type 12-lipoxygenase: role of lipoxygenase products in platelet activation. J Lipid Res. 2012 Dec;53(12):2546-59.

**Caution: Product has not been fully validated for medical applications. For research use only.**

Tel: 609-228-6898

Fax: 609-228-5909

E-mail: tech@MedChemExpress.com

Address: 1 Deer Park Dr, Suite Q, Monmouth Junction, NJ 08852, USA