



SZABO SCANDIC

Part of Europa Biosite

Produktinformation



Forschungsprodukte & Biochemikalien



Zellkultur & Verbrauchsmaterial



Diagnostik & molekulare Diagnostik



Laborgeräte & Service

Weitere Information auf den folgenden Seiten!
See the following pages for more information!



Lieferung & Zahlungsart

siehe unsere [Liefer- und Versandbedingungen](#)

Zuschläge

- Mindermengenzuschlag
- Trockeneiszuschlag
- Gefahrgutzuschlag
- Expressversand

SZABO-SCANDIC HandelsgmbH

Quellenstraße 110, A-1100 Wien

T. +43(0)1 489 3961-0

F. +43(0)1 489 3961-7

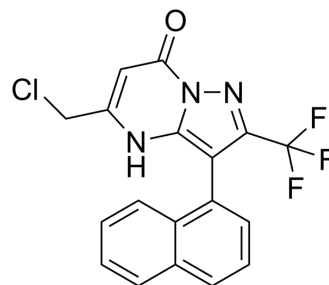
mail@szabo-scandic.com

www.szabo-scandic.com

[linkedin.com/company/szaboscandic](https://www.linkedin.com/company/szaboscandic) 

QO-40

Cat. No.:	HY-130070
CAS No.:	1259536-70-3
Molecular Formula:	C ₁₈ H ₁₁ ClF ₃ N ₃ O
Molecular Weight:	377.75
Target:	Potassium Channel
Pathway:	Membrane Transporter/Ion Channel
Storage:	-20°C, protect from light * In solvent : -80°C, 6 months; -20°C, 1 month (protect from light)



BIOLOGICAL ACTIVITY

Description	QO-40 is a pyrazolo[1,5-a]pyrimidin-7(4H)-one (PPO) derivative and an activator of the voltage-gated M-type potassium channel KCNQ encoded by the KCNQ2/3 gene (EC ₅₀ : 1.25 μM) ^{[1][2]} .	
IC₅₀ & Target	vEC ₅₀ : 1.25 μM (oltage-gated M-type potassium channel) ^[1]	
In Vitro	QO-40 (100 μM) increases KCNQ2/3 currents in CHO cells ^[1] . MCE has not independently confirmed the accuracy of these methods. They are for reference only. Cell Viability Assay ^[1]	
	Cell Line:	CHO cells
	Concentration:	100 μM
	Incubation Time:	
	Result:	Increased the amplitude of the activated outward current at 0 mV.

REFERENCES

[1]. Jia C, et al. Activation of KCNQ2/3 potassium channels by novel pyrazolo[1,5-a]pyrimidin-7(4H)-one derivatives. *Pharmacology*. 2011;87(5-6):297-310.

Caution: Product has not been fully validated for medical applications. For research use only.

Tel: 609-228-6898

Fax: 609-228-5909

E-mail: tech@MedChemExpress.com

Address: 1 Deer Park Dr, Suite Q, Monmouth Junction, NJ 08852, USA